

# Dust clouds, climate change and coins: consilience of palaeoclimate and economy in the Late Antique southern Levant

D. Fuks<sup>1</sup>, O. Ackermann<sup>1,2</sup>, A. Ayalon <sup>3</sup>, M. Bar-Matthews<sup>3</sup>, G. Bar-Oz<sup>4</sup>, Y. Levi<sup>5</sup>, A. M. Maier <sup>1</sup>, E. Weiss<sup>1</sup>, T. Zilberman<sup>3</sup> and Z. Safrai<sup>1</sup>

The climate factor has become a focus of much historical and archaeological investigation, encouraged recently by improvements in palaeoclimatic techniques and interest in global climate change. This article examines correlations between climate and history in the Byzantine southern Levant (c. 4th–7th centuries AD). A proposed 5th century economic downturn attested to by numismatic trends is shown to coincide with palaeoclimatic evidence for drought. We suggest a climatic ultimate cause for the apparent economic decline. In addition, the relationship between the Dust Veil Index (DVI) and annual precipitation in Jerusalem suggests the likelihood of increased precipitation following the 536 AD volcanic dust veil. This prediction is borne out by high-resolution precipitation reconstructions from Soreq cave speleothems and by sedimentation records of extreme flash flooding. These finds complement palaeoclimatic reconstructions from Europe showing a drop in precipitation after 536 AD. Drought in Europe and flooding in the Middle East are both expected outcomes of global cooling during volcanic winters, such as those described in historical accounts of the 530s AD.

**Keywords** palaeoclimate change, 536 AD dust veil, missing century, climate history, Byzantine Levant

## Introduction

The aim of this article is to examine instances of consilience between economic and climatic developments in the Byzantine southern Levant (c. 4th–7th centuries AD). The question of climate change as an influencing factor in societal reorganization has been at the forefront of a variety of recent historical, archaeological and palaeoclimatic studies (e.g. Brooks 2013; Büntgen *et al.* 2011; 2016; Butzer and Endfield 2012; Caseldine and Turney 2010; deMenocal 2001; Finné *et al.* 2011;

Holmgren *et al.* 2016; Izdebski *et al.* 2016; Ljungqvist 2009; Manning 2013; McCormick *et al.* 2012; McIntosh *et al.* 2000; Rosen 2007; Toohey *et al.* 2016; Weiss *et al.* 1993). A number of attempts have been made to examine the effects of climate change and fluctuation on ancient societies in the southern Levant (e.g. Bar-Matthews and Ayalon 2011; Bar-Matthews *et al.* 1998; Bruins 1994; Clarke *et al.* 2016; Ellenblum 2012; Faust and Ashkenazy 2007; Finkelstein and Langgut 2014; Frumkin 2009; Issar and Zohar 2004; Langgut *et al.* 2013; Migowski *et al.* 2006; Rambeau 2010; Riehl 2008; 2009; Riehl *et al.* 2014; Rosen 1995; 1997; 2007). In the case of the Byzantine southern Levant, the influence of climate on history has been debated for over a century (Evenari *et al.* 1982; Frumkin *et al.* 1998; Haiman 1995a: 48; Huntington 1911; Issar 2003: 25–27; Issar and Tsoar 1987; Issar *et al.* 1991; Kedar 1957: 185–86; Reifenberg 1955; Rosen 2007; Rubin 1989).

<sup>1</sup>Institute of Archaeology, The Martin (Szusz) Department of Land of Israel Studies and Archaeology, Bar-Ilan University, Ramat-Gan, 5290002, Israel; <sup>2</sup>Israel Heritage Department and the Department of Land of Israel Studies and Archaeology, Ariel University, Israel, P.O.B. 3, Ariel 40700; <sup>3</sup>Geological Survey of Israel, 30 Malchei Israel Street, Jerusalem, 95501, Israel; <sup>4</sup>Zinman Institute of Archaeology, University of Haifa, Mount Carmel, Haifa 3498838, Israel; <sup>5</sup>Israeli Meteorological Service, Bet Dagan, Israel

Daniel Fuks (corresponding author), Archaeobotanical lab, Institute of Archaeology, The Martin (Szusz) Department of Land of Israel Studies and Archaeology, Bar-Ilan University, Ramat-Gan, 5290002 Israel. Email: daniel.fuks@biu.ac.il

Collaboration between palaeoclimatologists, historians and archaeologists in identifying convergences of their data and theories is essential to reconstructing the effects of ancient climate on history (Izdebski *et al.* 2016; McCormick 2013). This strategy exemplifies ‘consilience’, defined by E. O. Wilson as ‘a “jumping together” of facts and fact-based theory across disciplines to create a common groundwork of explanation’ (Wilson 1999: 8–9). Application of this approach to the Roman Empire as a whole has shown that in the key period of imperial expansion, *c.* 1–200 AD, a wetter and warmer climate prevailed in Eurasia (Büntgen *et al.* 2011; Luterbacher *et al.* 2012; Manning 2013; McCormick *et al.* 2012; Scheidel 2010: 10–11). This was followed by crisis and climatic instability *c.* 200–300 AD, and partial climatic and political recovery *c.* 300 AD. It has also been proposed that wetter conditions in the Levant beginning in the 4th or 5th century may explain the success of the eastern Roman Empire at this time (Harper 2017a; McCormick *et al.* 2012). In the 7th–8th centuries, by contrast, wetter and warmer climate is contemporaneous with the stabilization of successor states in the former western Roman Empire. Meanwhile in the East, ‘the climatic picture remains sketchy for the era and area that saw the rise of the Islamic Empire and its near global economy in the late seventh and eighth century’ (McCormick *et al.* 2012: 202).

These studies have highlighted the need for more local and detailed palaeoclimatic histories of the Roman Empire. In line with that goal, the present article examines relationships between the results of the detailed Soreq cave palaeoclimate record (Bar-Matthews *et al.* 2003; Orland *et al.* 2009) and historical processes within the Byzantine southern Levant. Consiliences include a 5th century drop in both rainfall and numismatic finds, and the mid-6th century global dust veil during the last stage of Byzantine economic/demographic growth in Palestine. Although climatic desiccation in the 7th century is concurrent with the Sasanid and Islamic invasions, these events have a much more complex history. At present, causal linkages between climate change and 7th century conquest in the southern Levant are difficult to establish without recourse to determinism.

### Trends of the Byzantine southern Levant and beyond

In the pre-modern historical and archaeological record of the southern Levant,<sup>1</sup> the Byzantine period (*c.* 4th–7th centuries AD) appears to be *the* peak phase of

<sup>1</sup>For the various geographical elements mentioned in the text, see Fig. 1.

demographic growth and settlement (e.g. Rosen 2016; Safrai 1986: 26–27; 1998; Tsafirir 1996). However, framing this epoch’s end is controversial (Avi-Yonah 1958; Avni 2011; 2014; Faust and Safrai 2015: 268–84; Haiman 1995a; 1995b; Hirschfeld 2006; Kennedy 1985; Liebeschuetz 1992: 34; Magness 2003; Milwright 2010: 30). Key methodological issues in that debate include the limitations of using archaeological survey data as a tool for assessing demographic changes, the lack of fine-tuned ceramic chronologies for the later Byzantine–Early Islamic centuries, and the difficulty in accounting for ancient economic growth and decline (Avni 2014: 21–23; Faust and Safrai 2005; 2015; Haiman 2012; Magness 2003; Scheidel 2008). In a recent series of surveys conducted in northern Israel using accurate Kfar Hananya pottery typology (Adan-Bayewitz 1993), the data pointed to a demographic decline already at the beginning of the Byzantine period (*c.* 350–400 AD).<sup>2</sup> Thus, while in broad resolution this period does seem to represent a global maximum of settlement (Hirschfeld 2004; 2007; Rosen 2009; 2016), local and temporal complexity abounds. The following two historical phenomena further suggest the need to refine the paradigm of monolithic growth throughout the Byzantine period in the southern Levant.

#### The ‘missing’ 5th century

In his book, *The Missing Century*, Safrai (1998) argued for a 5th century AD (408–491 AD) decline in demographic and economic vitality in the southern Levant, and the eastern Roman Empire generally. This conclusion was based primarily on quantitative numismatic data, particularly the marked decrease in identified bronze coins from the 5th century (Fig. 2). This trend is corroborated by an independent database compiled by Gitler, in which the number of coins finds annually is 4.5 for the years 383–408 AD, 0.4 for 408–489 AD, 0.7 in the 6th century and 0.4 in the 7th century (Gitler and Weisburd 2005; see also Bijovsky 2000–2002; 2012; Guest 2012). Although these trends are uncontested, critics of the ‘missing century’ hypothesis offer alternative explanations for the numismatic evidence (Bijovsky 2000–2002; 2012; Gitler and Weisburd 2005) or alternative evidence

<sup>2</sup>This includes the following surveys: 1) the Lower Golan survey (Ben David 2006); 2) the eastern Lower Galilee survey (Leibner 2004: 346–51); 3) the Rosh Pina survey (Stepansky 2012); 4) the Regavim Map (Gadot and Tepper 2012); 5) the eastern Upper Galilee survey (Frankel *et al.* 2001). The decline is evident in the last survey only if one differentiates between sites in the western Upper Galilee and those of the eastern Upper Galilee. Dating of the settlement patterns in these surveys (excluding no. 4) are based on the Kfar Hananya pottery typology developed by Adan-Bayewitz (1993). The decline process is evident in about one third of the settlements.



**Figure 1. Geographical elements and locations mentioned in the text. (a) The Eastern Mediterranean; (b) Roman-Byzantine Judea/Palaestina.**

suggesting economic viability during the 5th century (Kingsley 2001; 2004). In spite of these criticisms, we adopt Safrai's view, for reasons discussed below.

Bijovsky (2000–2002; 2012) interprets the drop in dated coins as reflective of altered minting and currency practices in response to political and social developments. These include reduced official minting, increased local minting, reuse of 4th century coins in the 5th century, and the proliferation of *minimi* — small, common and mostly undated coins which were often traded in closed purses. In general, we do not deny that such responses may have occurred, but maintain that these are proximate, rather than ultimate, causes of the numismatic trends.

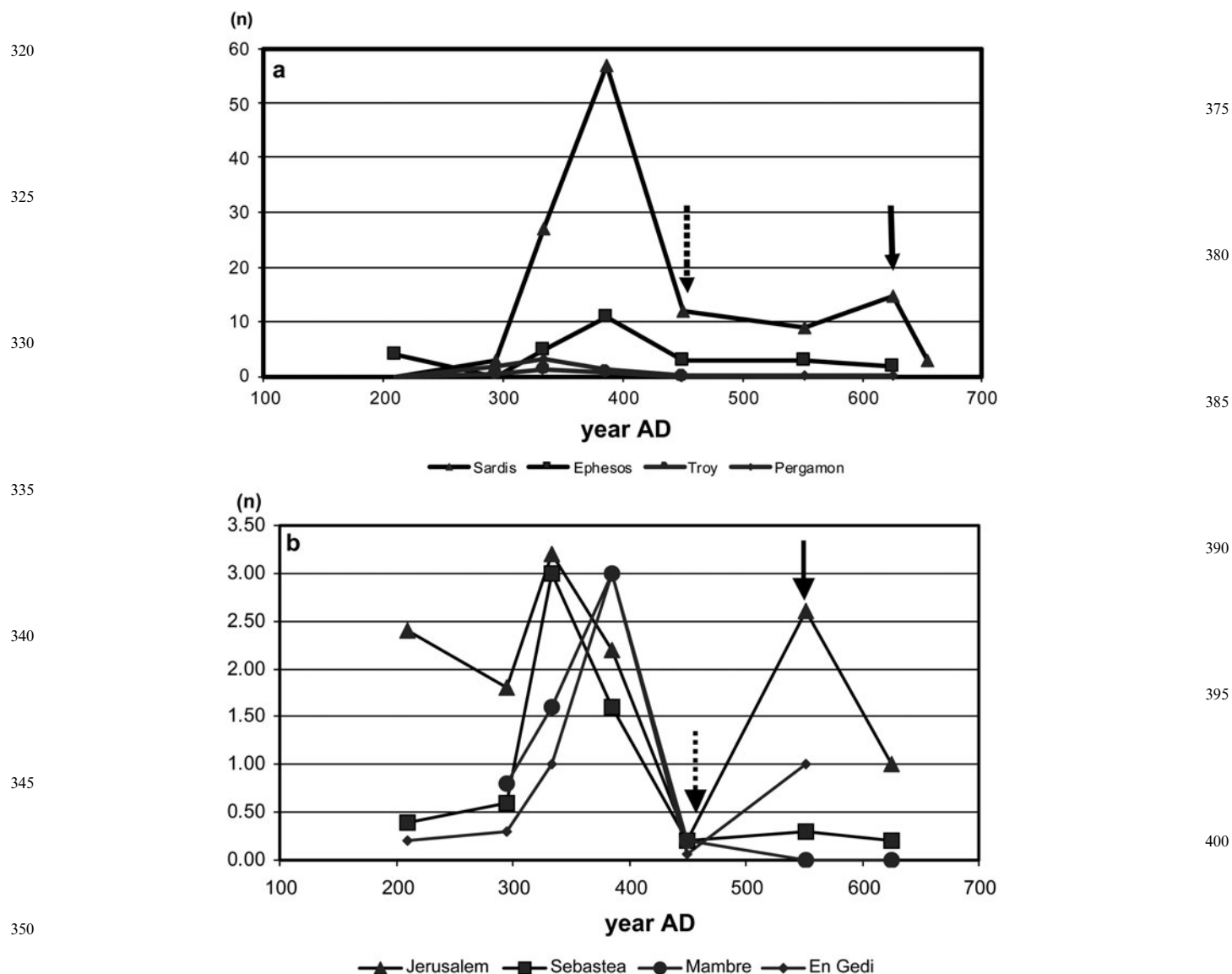
Regarding reuse of old coins in particular, the issue of coin 'shelf life' raises questions as to the dating of archaeological sites based on numismatic finds (Bijovsky 2000–2002; 2012; Safrai 1998: 13–18). In the context of the Byzantine southern Levant, this numismatic critique fits well with the reappraisal of ceramic chronologies spearheaded by Magness, potentially undermining traditional chronologies (Magness 2000; 2003). However, Safrai (2011–2014) has shown from coin hoard data that most coins deposited in a given hoard were issued in the century of deposition (see also Waner and Safrai 2001). This further supports his original assumption (Safrai 1998: 15–18) that the predominance of dated coins was deposited in the century of issue, even if some were not (Bijovsky 2000–2002; 2012; Foss 2015).

Gitler and Weisburd (2005: 552) argued that the 5th century was not a unique minimum for coinage but rather the 4th century was a unique maximum. This

would appear to support Bijovsky's argument that the changes reflect specific minting practices instead of real economic growth and decline. It is true that the 4th century is anomalous among multi-centennial coin frequencies. However, we maintain that both the extreme rise in 4th century coinage and the 5th century fall were related to economic, and not merely fiscal, developments (see below).

Guest's (2012) study of nine eastern Mediterranean and six lower Danube sites reveals the 5th century slump in coin finds as widespread and significant on the multi-centennial scale (see also Noeske 2000: 207–09, 213–18, 347–53, 440–44, 468–73, 474–79, 598–607, 610–11, 625–28, 645–65, 672, 677–81, 701ff; Fig. 2b). Guest, like Bijovsky, attributes the decline to decreased imperial minting and extended circulation of 4th century coins, while also hinting at possible underlying economic causes. He cautiously speculates that 'this policy of reduced bronze output was a reaction to the devaluation of the small change already in circulation after the period of intensive production at the end of the fourth century' (Guest 2012: 118).

Both Bijovsky (2000–2002) and Guest (2012: 113) argue that people adapted to the tight monetary policy while maintaining commerce and trade. Foss (2015) seems more inclined to relate the 5th century decline in coin quantity (and quality) to real economic decline, in his review of Bijovsky's (2012) book on coinage in Byzantine Palestine. 'Bijovsky sees the reduction in size and quantity not as decline but as "creative monetary activity", a response to a fiscal crisis. The explanation remains murky, but Bijovsky's



**Figure 2.** (a) Average number of coins per year during the Roman-Byzantine periods in selected cities of eastern Asia Minor and Syria; (b) Average number of coins per year during the Roman-Byzantine periods in selected sites in Judea. Dashed arrows highlight the sharp decline in coin quantities during the 5th century AD. Black arrows highlight the partial increase in coin quantities after the 5th century AD.

analysis of the coinage is exemplary (Foss 2015: 954). To be sure, the fact that people adapted to a lack of coinage while maintaining a modicum of commerce and trade does not mean that the economy flourished.

The main criticism of the ‘missing century’ hypothesis, based on other types of evidence, derives from ceramic finds. Kingsley (2001: 54) considers the large 5th century deposits of Palestinian containers in the ceramic record from Carthage, Argos and other Mediterranean sites to be evidence against the disruption of trade networks postulated by Safrai (1998). He even goes so far as to claim that large-scale export from Palestine ‘took off’ in the first half of the 5th century and that quantitative ceramic evidence

suggests ‘regular and continuous wine export through the seventh century’ (Kingsley 2004: 98). However, he admits that: ‘Insufficient numbers of deposits of overlapping date have been excavated in the Mediterranean to assess subtle fluctuations in the scale of long-distance trade during the Byzantine period ...’ (*Idem*).

Indeed, in order to rigorously evaluate the trade-related predictions of the ‘missing century’ hypothesis, a meaningful comparison of trade volume by century is needed for a number of sites. This could be accomplished through standardized quantitative ceramic analyses, as well as shipwreck archaeology. Parker’s pioneering research on Mediterranean shipwrecks



425 was recently made into an updated open-source data-  
base, a cursory examination of which appears to  
support a 5th century decline (Parker 1992: fig. 3;  
Strauss 2013; see also McCormick *et al.* 2013;  
Morley 2007: 572). However, the dearth of shipwreck  
430 excavations (rather than surveys), as well as the scar-  
city of standardized quantitative ceramic analyses, sig-  
nificantly limits the evidence for export trends  
(Kingsley 2004: 69). A similar situation abounds for  
the papyrological evidence. The 5th century is  
435 uniquely lacking among the otherwise rich set of econ-  
omic papyri from Egypt (Harper 2016: 813), preclud-  
ing meaningful economic conclusions for this short  
period.

At least until additional data becomes available, it  
440 may be concluded from the above that: (1) there is  
no adequate evidence for economic growth in the  
eastern Mediterranean of the 5th century, and (2)  
strictly fiscal explanations of the coin trends do not  
preclude economic ones. The following economic  
445 interpretation of the 5th century numismatic data  
builds on Safrai's (1998) 'missing century' hypothesis.

The quantity of incidental coin finds for a given  
century, is a factor of the number of transactions and  
the number of coins used per transaction (Safrai  
450 1998). Thus, both real economic growth and inflation  
(often caused by over-minting) should be positively  
correlated with a greater quantity of numismatic  
finds for a given period. This is exactly what is seen  
in the Roman Empire of the 4th century, a period of  
455 economic growth that has been attributed to monetary  
expansion (Banaji 2007: 3).

It is not possible within the scope of this article, to  
separate the influence of inflationary minting on inci-  
dental coin finds, from the influence of real economic  
460 growth on the same. However, it may be noted that the  
effects of increased minting on incidental coin finds  
will be limited if the number of transactions does not  
increase, i.e. in a stagnant economy. Similarly, econ-  
omic growth under a tight monetary policy should  
465 yield relatively modest increases in coin finds for that  
period (with the effect of increased transactions poten-  
tially cancelled out by deflationary tendencies). This  
could have been the case for the early 6th century,  
which was a period of general economic growth  
470 (Morrisson and Sodini 2002). For the 6th century,  
the number of coins per year in Gitler and  
Weisburd's data is 75% higher than the 5th century,  
though on a different order of magnitude from that  
of the 4th century (Gitler and Weisburd 2005; see  
475 also Fig. 2; Guest 2012: 111; Safrai 1998). Thus, the  
very high frequency of 4th century coins seems to rep-  
resent a combination of inflation and real economic

growth, whereas the drastic coin decline in the 5th  
century reflects economic decline as well as — or inse-  
parable from — monetary contraction. 480

The 4th century economic boom may be seen as a  
partial recovery from the 2nd and 3rd century crises  
associated with the Antonine pandemic (165 AD)  
and the Plague of Cyprian (250–270 AD), respectively  
(Banaji 2007; Bowman and Wilson 2009; Harper 485  
2016). One of its effects was increased conglomeration  
of land and the means of production in large estates  
throughout the Roman East, as evidenced in particu-  
lar by Egyptian sources (Bagnall 1992; Banaji 1992;  
1999; 2007; Hardy 1968; Hickey 2009). Historical 490  
records also point to a similar process in Byzantine  
Palestine (Gil 2006; Jones 1958; 1964: 797; Safrai  
1998: 37–50; Waner and Safrai 2001). Significantly,  
the 4th century boom was not followed by continued  
investment and growth, due to speculation and hoard- 495  
ing on the part of wealthy landowners (Ferrer-Maestro  
2014).

In the late 5th and early 6th centuries, the numis-  
matic evidence indicates that settlement in the  
southern Levant recovered, at least partially (Safrai 500  
1998; Fig. 2). However, there were regions, such as  
the Galilee, where the recovery was not as clear,  
since the crisis there had been of a greater magnitude  
(Leibner 2009: 376–89). Perhaps this region's location  
on the margins of Palestine made it particularly vul- 505  
nerable to the economic downturn.

#### *The 6th century dust veil*

The mysterious dust veil of 536 AD was one of the 510  
most widespread and influential climatic events of  
recorded history, attested to by extensive dendro-  
chronologies, ice-core acid layers and historical  
sources (Arjava 2005; Baillie 1991; 1994; 2008;  
Baillie and McAneney 2015; Salzer and Hughes 515  
2007; Stothers 1984; Stothers and Rampino 1983).  
Thought by some to be the result of a comet or aster-  
oid strike (Baillie 1999; 2007; Rigby *et al.* 2004), recent  
ice-core and dendroecological evidence supports a vol-  
canic cause (Baillie 2008; 2010; Larsen *et al.* 2008; Sigl 520  
*et al.* 2015; Toohey *et al.* 2016; thereby confirming  
Stothers 1984; 1999; Stothers and Rampino 1983).  
Recent multi-proxy data has attested to global  
climate forcing from two volcanic eruptions, one in  
535 AD or early 536 AD, and the other in 539 AD 525  
or 540 AD (Sigl *et al.* 2015). These eruptions may  
have been similar to those in Pinatubo, 1991,  
Krakatau, 1883, or Tambora, 1815 (Larsen *et al.*  
2008; Luterbacher 2015; Sigl *et al.* 2015; Toohey  
*et al.* 2016). 530

The immediate climatic effect of the dust veil would have been global cooling in the form of a volcanic winter. This would cause a precipitation plunge in Europe and a rainfall rise in the Middle East (see below, ‘The Dust veil Index and Rainfall in the Southern Levant’). Indeed, multi-proxy studies have confirmed a marked drop in Eurasian temperatures in the mid-6th century, combined with a drop in western European summer precipitation (Büntgen *et al.* 2011; 2016; Mann *et al.* 2008; McCormick *et al.* 2012). This probably harmed agricultural production in northern Europe, but not necessarily in southern Europe (Toohey *et al.* 2016: 410). The global cooling was apparently sustained by ocean and sea positive feedback mechanisms, perhaps enhanced and continued by an independent decline in solar irradiance *c.* 500–700 AD (Büntgen *et al.* 2016; Manning 2013; Steinhilber *et al.* 2009; Vieira *et al.* 2011). The decade of 536–545 AD was the coldest, of the last 2,000 years, in Eurasia (d’Arrigo *et al.* 2001; Büntgen *et al.* 2011; 2016), and the entire period from 536–660 AD has been labelled the Late Antique Little Ice Age (Büntgen *et al.* 2016).

The dust cloud of 536 AD has been evoked to explain a variety of historical events, including: the rise of Anglo-Saxon dominance in Britain; gold hoarding, social change and ergotism in Scandinavia; the second-phase of the Migration Period Barbarian invasions in central Europe; political turmoil in Italy and Gaul; state instability in China; and the Maya Hiatus in south-eastern Mexico and northern Central America (Axboe 1999; Bondeson and Bondesson 2014; Büntgen *et al.* 2016; Gräslund and Price 2012; Gunn 2000).

In the eastern Mediterranean, Byzantine sources describe a sun-dimming fog which lasted over a year and caused a particularly harsh winter, drought, crop failure, pestilence and wars (Arjava 2005; Stothers and Rampino 1983). The dust veil of 536 AD was listed by Hirschfeld (2006) as one of several factors behind a 6th century settlement decline in the southern Levant, together with a series of earthquakes and the outbreak of Justinianic plague in 541–2 AD (e.g. Meier 2016): the latter may itself have been triggered by the dust veil (Baillie 1991: 234; Büntgen *et al.* 2011; Gage *et al.* 2008; Kausrud *et al.* 2010; Keys 1999; Stenseth *et al.* 2006). In Hirschfeld’s view, these 6th century natural disasters marked the beginning of a demographic decline that continued with the Sasanid and Islamic conquests, and was completed by the 8th century (see also Foss 1975; 1997; cf. Avni 2014: 300–31; Findlay and Lundahl 2006). However, the paradigm of a 6th–8th century decline has been

questioned (Avni 2014; Magness 2003; Peterson 2005; Schick 1995; 1998; Whitcomb 1988; 1994; 1995; cf. Haiman 2012). Harper (2017b) offers a more nuanced approach, acceding that Justinianic plague, devastating earthquakes, and war with Persia during the 6th century, significantly weakened the eastern Roman Empire, the Levant included. ‘But in all, the southern Levant proved the most resilient corner of the entire ancient Mediterranean’ (Harper 2017b: 270).

## A palaeoclimatic assessment: climatic trends of the Byzantine southern Levant and beyond

### *The current environment of the southern Levant*

The southern Levant (modern day Israel, Jordan and the Palestinian Authority) is situated on the eastern edge of the Mediterranean basin, at the junction between three main climate zones: sub-humid Mediterranean, semi-arid, and arid (Goldreich 2003). The climate is characterized by a sharp north–south and west–east rainfall gradient, yielding an average annual rainfall range from 1300 mm to less than 50 mm. The coastal plain and central hills in the north and west receive relatively high annual rainfall, ranging from 900 mm to 300 mm. The Jordan River valley and the Judean Desert in the east, and the Negev Desert and Arava Valley in the south, are characterized by semi-arid to extreme arid conditions, with annual rainfall of 300 mm to under 50 mm (Fig. 3).

The rainy season ranges from the end of October to the end of April; most of the annual precipitation falls during the months of December, January and February. The rains are frontal rains, characterized by short, intense events separated by long intervals. The climate is also characterized by seasonal fluctuations and cycles of drought (Goldreich 2003).

Long-term research on the response of ecological systems to inter-annual rainfall fluctuations in Israel has demonstrated that semi-arid areas are the most sensitive to the effects of climatic fluctuations (Lavee *et al.* 1998). This is true of annual vegetation in particular (Kutiel *et al.* 1995). Therefore, it can be inferred that climatic fluctuations would have particularly affected annual rangeland vegetation, since most grazing areas are found in semi-arid regions. In drought years, grazing activity moved from semi-arid areas to sub-humid areas causing high grazing pressure on the landscape and potential conflict between nomadic and sedentary people (Shmueli 1980).

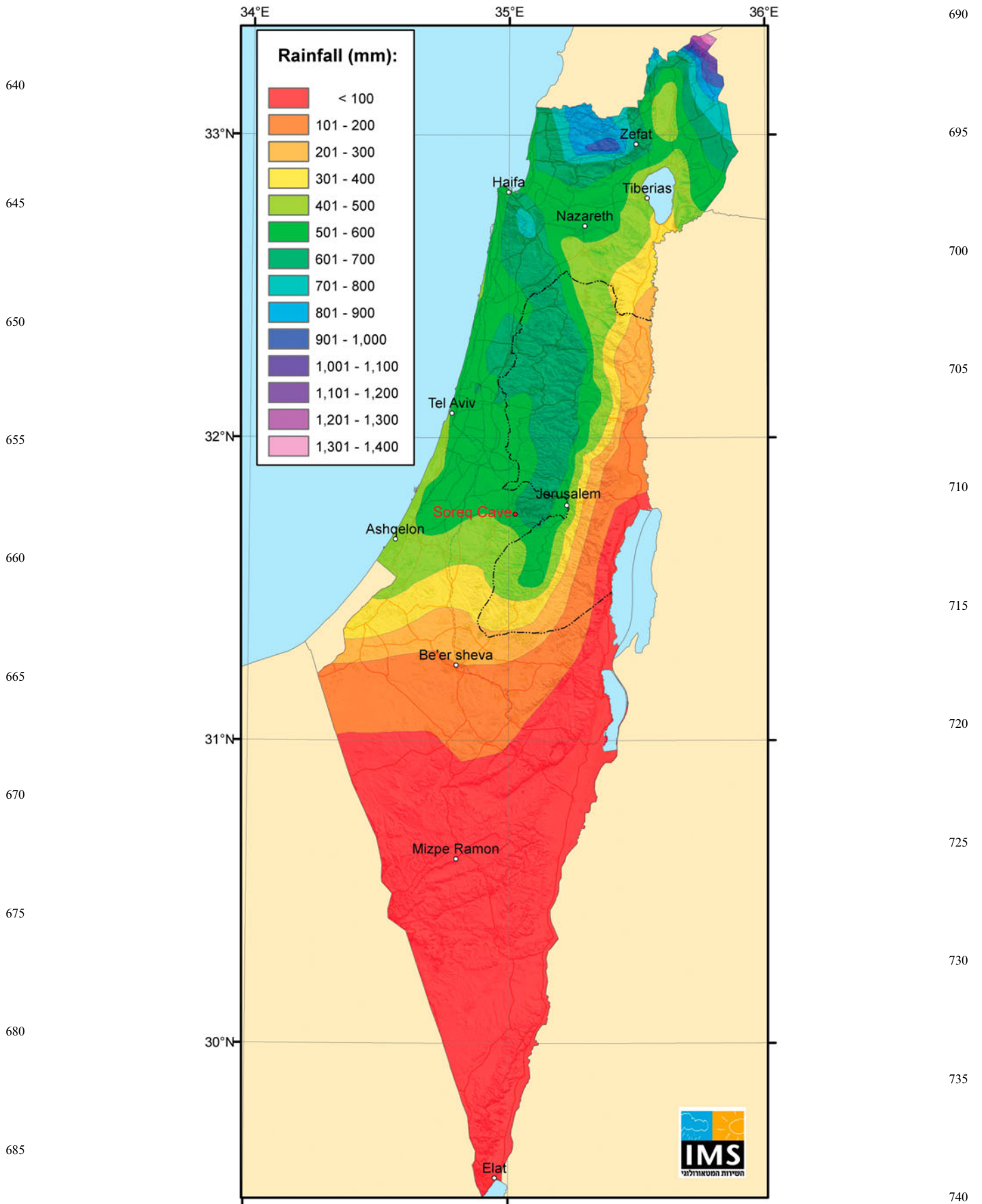
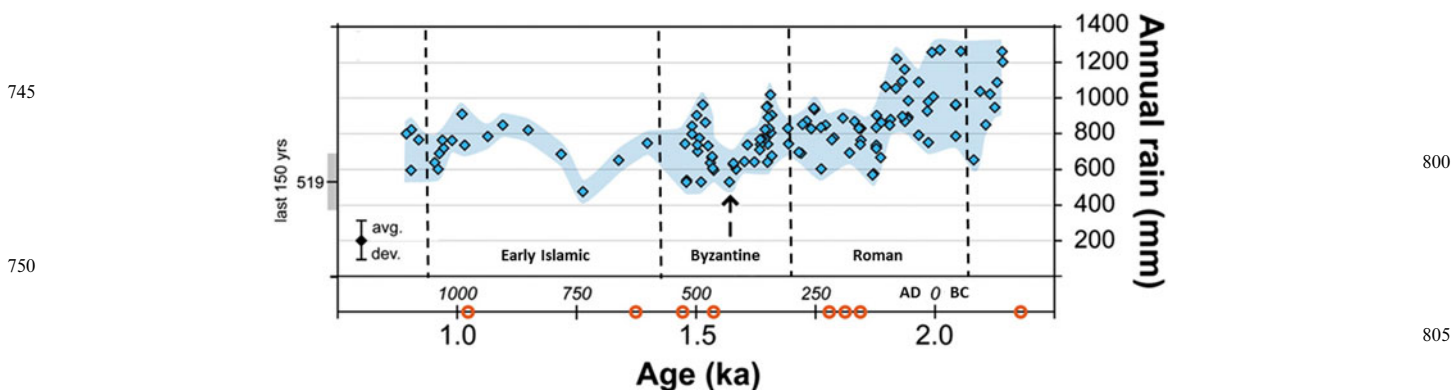


Figure 3. Mean annual rainfall (mm) in various regions in Israel and the Occupied Territories from 1981 to 2010 (Courtesy of the Israeli Meteorological Service).



**Figure 4.** Calculated annual rainfall for the southern Levant during the last 2000 years, according to the Soreq Cave. From Orland et al. 2009, fig. 6 with permission of Cambridge University Press. The plot estimates annual rainfall (mm) quantities calculated from the  $\delta^{18}\text{O}$  values of wet-season calcite (light fluorescence) assuming a drip water temperature of  $19^\circ\text{C}$  and the effect of rainfall quantity on  $\delta^{18}\text{O}_{\text{rain}}$ :  $\delta^{18}\text{O}_{\text{rain}} (\text{‰VSMOW}) = -0.0036 (\text{annual ppt}) - 3.9e$ ; the dashed arrow highlights sharp decreases of annual rainfall in the 5th century CE/1.5 ka. The shaded region represents the range of rainfall estimates calculated for drip water temperature between  $18$  and  $20^\circ\text{C}$ . The average deviation of modern rainfall data from the above equation is shown in the lower left of panel C. The mean and 1 s.d. range of annual rainfall in Jerusalem for the last 150 years, as collected by the Israel Meteorological Survey, is plotted on the left axis.

#### The Late Holocene climate record of the southern Levant

One of the major proxies used for palaeoclimate reconstruction in the Mediterranean region is the isotopic composition of speleothems (Bar-Matthews and Ayalon 2004; Bar-Matthews et al. 1998; Luterbacher et al. 2012). The conventional  $\delta^{18}\text{O}$  profile used to reconstruct precipitation (e.g., Bar-Matthews et al. 2003; Schilman et al. 2002) was performed using a micro driller (0.5 mm in diameter), by drilling every 0.5 to 1.0 mm along the length of the speleothem and measuring the isotopic composition of the collected powder. More recently, a higher resolution study conducted by Orland et al. (2009) was based on ion microprobe analysis. In this study, oxygen analyses were made from  $\sim 10 \mu\text{m}$ -diameter spots along a 5.5 cm traverse of a sample that grew in the Soreq cave between 2200 and 900 years BP, providing a seasonal resolution of rainfall data (Fig. 4).

Orland et al.'s (2009) study clearly demonstrates that relatively humid conditions prevailed during the first part of the Roman period (c. 100 BC–100 AD), with annual rainfall declining thereafter. The estimated annual rainfall at Soreq during the second part of the Roman period varied from 600–800 mm. Whereas the Roman period was relatively wet, the Byzantine period was characterized by overall greater aridity and sharp rainfall fluctuation, as is also evident from the Dead Sea level record (Bookman et al. 2004; Enzel et al. 2003; Frumkin 1997). A distinct rainfall decline during the 5th century, recovering in the 6th, and declining steadily in the 7th century AD is evidenced by the significantly high and relatively

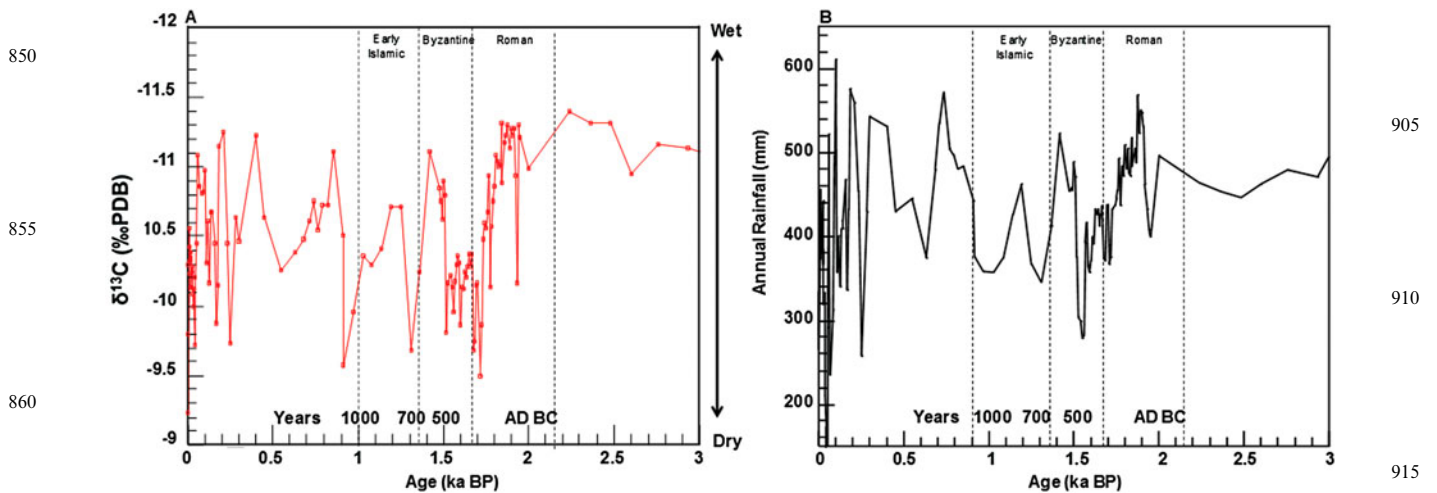
long  $\delta^{18}\text{O}$  and  $\delta^{13}\text{C}$  peaks of Soreq Cave isotopic profiles (Figs 4, 5).

#### Vegetation during the Late Holocene

Palynological studies conducted at Birkat Ram in the Golan Heights (Neumann et al. 2007a), the Sea of Galilee (Baruch 1986), and the Dead Sea (Neumann et al. 2007b; 2010), show that throughout the late Holocene the southern Levant was characterized by Mediterranean-type vegetation. Olive pollen is a useful indicator of agricultural activity because cared-for olive trees produce large quantities of pollen, while abandoned trees do not (Langgut et al. 2014). Periods in which there is evidence of more olive pollen than natural woody plant pollen, are interpreted as times of high agricultural activity. Conversely, periods in which there is evidence of increased woody plant pollen and decreased olive pollen, are associated with low agricultural activity. An example recorded in all of the aforementioned studies is the transition from the Byzantine period to the Islamic period, in which olive cultivation was apparently reduced to a minimum. In the studies by Neumann et al. (2007b; 2010), a reduction in the amount of olive pollen between the 3rd and 5th centuries AD was identified in a few Dead Sea sites.<sup>3</sup> This likely reflects a reduction of olive crops and could be correlated with a severe drought that occurred during this period.

<sup>3</sup>In particular, Ze'elim erosion gully ZA2; also core DS7-1SC north-east of Ein Gedi and outcrop EFE in the oasis of Ein Feshkha.





**Figure 5.** The  $\delta^{13}\text{C}$  record of the Soreq Cave speleothems during the last 3500 years. (a)  $\delta^{18}\text{O}$  and  $\delta^{13}\text{C}$  isotopic profiles of Soreq Cave speleothems during the last 3000 years. (b) Annual rainfall in the Soreq Cave region calculated for the last 3000 years, based on calibration curve plotted for  $\delta^{18}\text{O}$  water against annual rainfall quantity (Bar-Matthews et al. 2003; their fig. 4).

The  $\delta^{13}\text{C}$  isotopic composition of speleothems from the Soreq Cave provides another proxy for the vegetation history record (Bar-Matthews et al. 2003; Bar-Matthews and Ayalon 2011). This reconstruction of the climate is based on the fact that lower  $\delta^{13}\text{C}$  values signal wetter conditions, while higher values represent drier conditions. These trends may reflect relatively higher distribution of C3 vegetation (mainly trees) during the wet periods. It is possible that higher  $\delta^{13}\text{C}$  values are indicative of an increasing distribution of C4 vegetation (shrubs and grasses) during the dry periods, or that the C3 vegetation was under stress (dry conditions, high temperatures and  $\text{CO}_2$  deficiency), resulting in increased  $\delta^{13}\text{C}$  values of the vegetation by up to 2–3‰. The Soreq Cave data ranges from -9.5‰ to -11.5‰ (Fig. 5a). It shows that over the past millennia, the region has been characterized by Mediterranean-type C3 vegetation. In addition, plotting the  $\delta^{13}\text{C}$  record superimposed on the speleothems  $\delta^{18}\text{O}$  record (Fig. 5a) reveals clearly that both exhibit identical trends. Thus, a trend toward lower  $\delta^{13}\text{C}$  values (-11.3‰) is observed during the 1st century AD (~2000 BP), with significantly higher  $\delta^{13}\text{C}$  values (-9.5–9.8‰) during the 4th to 6th centuries AD (~1700–1500 BP).

The pollen sediments, even those that have been radiocarbon dated, lack a continuous high-resolution chronology. Furthermore, although abandoned olive trees rapidly increase pollen production after pruning (Langgut et al. 2014), the converse does not follow and there may be a sub-centennial time lag between actual abandonment and the record thereof. Therefore, singular reliance on this proxy for historical

interpretation on a centennial (or less) scale is problematic. However, when taken together with the speleothem proxy ( $\delta^{13}\text{C}$ ), there appears to be good evidence for drought between the 4th and 5th centuries. Interestingly enough, further evidence for a significant drought during this same period comes from additional sites in Eurasia.

#### Additional evidence for 5th century drought in Eurasia

Several palaeoclimatic reconstructions from different parts of Eurasia corroborate a 5th century dry spell, perhaps beginning in the 4th century (Luterbacher et al. 2011: 75, fig. 1b; Luterbacher et al. 2012: 105, fig. 2.7; Manning 2013: 133, 149, n. 43). Tree-ring evidence from China suggests that the mid-5th century saw a multi-decadal drought in east and central Asia (Shao et al. 2010; Sheppard et al. 2004). In the Pyrenees, lake reconstructions suggest that some of the warmest winters of the past 2000 years occurred around 450 AD (Pla and Catalan 2005).

In central Anatolia, a multi-proxy diatom,  $\delta^{18}\text{O}$  isotopes, and pollen from Nar Gölü lake, attest to a century-and-a-half drought c. 400–540 AD, which is corroborated by tree-ring precipitation reconstruction (Woodbridge and Roberts 2011), as well as stalagmite reconstructions (Göktürk 2011; Göktürk et al. 2011). This dovetails with Tecer Lake levels, also from central Anatolia: ‘It is therefore particularly significant that both sites register the period centred on the 5th-century AD as the most extreme drought phase of the last two millennia’ (Woodbridge and Roberts 2011: 3386–87).

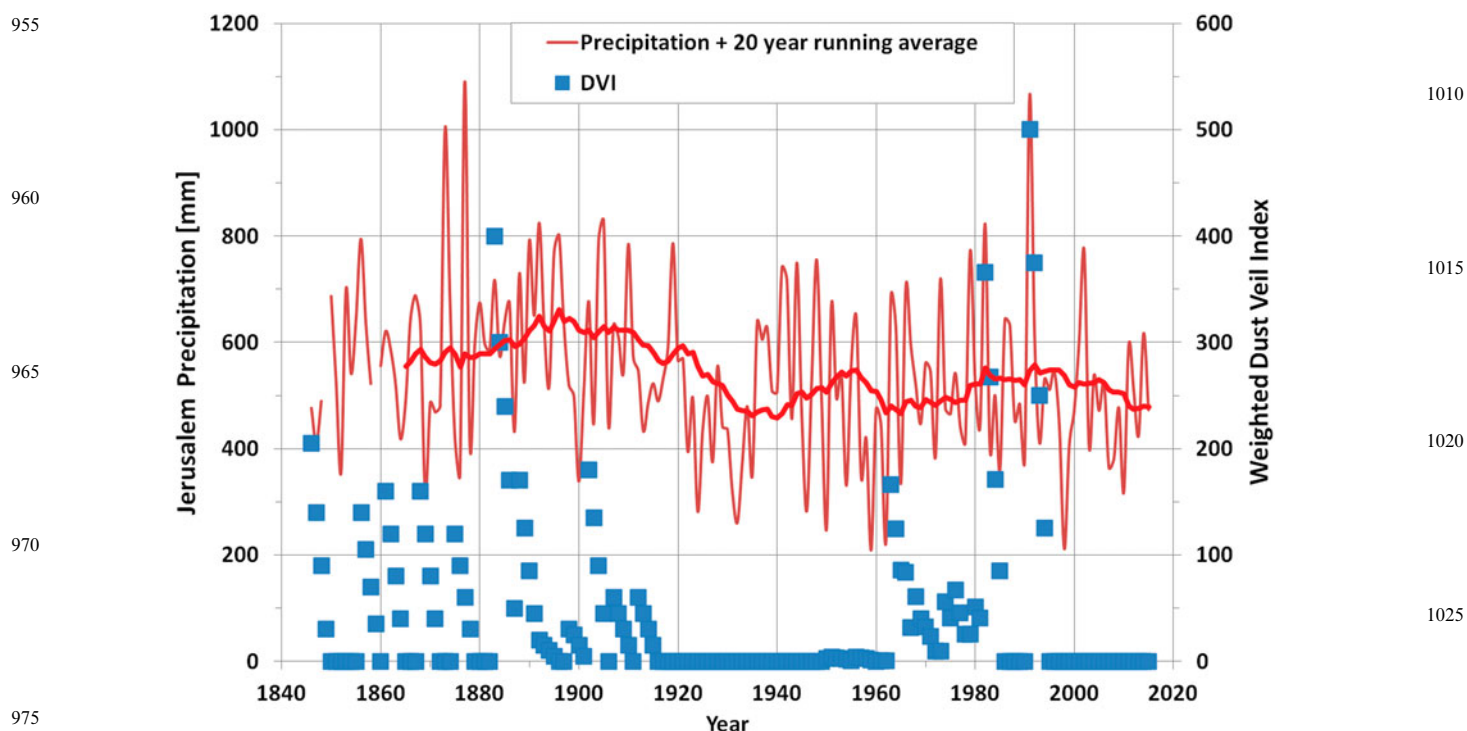


Figure 6. Annual rainfall in Jerusalem during the last 168 years (light red) together with a 10-year running average (dark red), superimposed on the northern hemisphere weighted Dust Veil Index (DVI) used by Mann et al. (2000).

Several additional studies support a serious drought in Asia Minor centred on the early 5th century, including evidence from written sources (synthesized in Haldon et al. 2014: 124–26, 154–60; Manning 2013: 161). The palaeoclimatic evidence from Asia Minor does not necessarily strengthen the palaeoclimatic reconstructions of the southern Levant because the two regions often follow different climatic regimes (Xoplaki et al. 2003). However, this century-long drought would have had important economic implications for the entire Roman East.

**The dust veil index and rainfall in the southern Levant**

Violent volcanic eruptions spew massive quantities of particles (aerosols) into the stable stratosphere layer at altitudes of 10 to 18 km. The main effect of persistent volcanic aerosols in the atmosphere is the blocking of incoming sunlight, which results in global average cooling. However, absorption of solar and terrestrial radiation may cause heating of the high stratosphere, leading to stronger winter polar vortexes (Perlwitz and Graf 1995). This causes more pronounced cooling in the Middle East (Robock and Mao 1992) and enhanced rainfall in the southern Levant (Bookman et al. 2014).

Figure 6 presents annual rainfall records from Jerusalem during the last 170 years, superimposed on the northern hemisphere weighted Dust Veil

Index (DVI) used by Mann et al. (2000). The DVI is a crude numerical estimate of the total quantity of solid matter thrown to the upper atmosphere by volcanic eruptions (Lamb 1970). The rainfall series was constructed using measurements from the Old City of Jerusalem between 1846 and 1973, and since 1974 from the roof of the Generali building in the centre of west Jerusalem. The data was homogenized by linear regression on the overlapping period between 1950 and 1973.

Even for this relatively short period within human history, annual rainfall varies considerably. Extremely wet years (1991, 1877 and 1873) received above 1000 mm, which is double the period average of 540 mm, and nearly five times that of the driest years (1998, 1962, 1959). This year-to-year variation is not always balanced on a decadal scale. For instance, the ten-year span from 1924–1933 recorded 42% less rainfall than the decade of 1888–1897. Analysis of the rainfall record for the entire period reveals that on average the years 1846–1919 witnessed 15% more rainfall than the years 1920–2015 (significant with P-value = 0.001, Student’s two-tailed t test). This change is similar in magnitude to the reduction in precipitation projected by the IPCC (Intergovernmental Panel on Climate Change) to take effect by 2100 in the region, due to anthropogenic climate change.

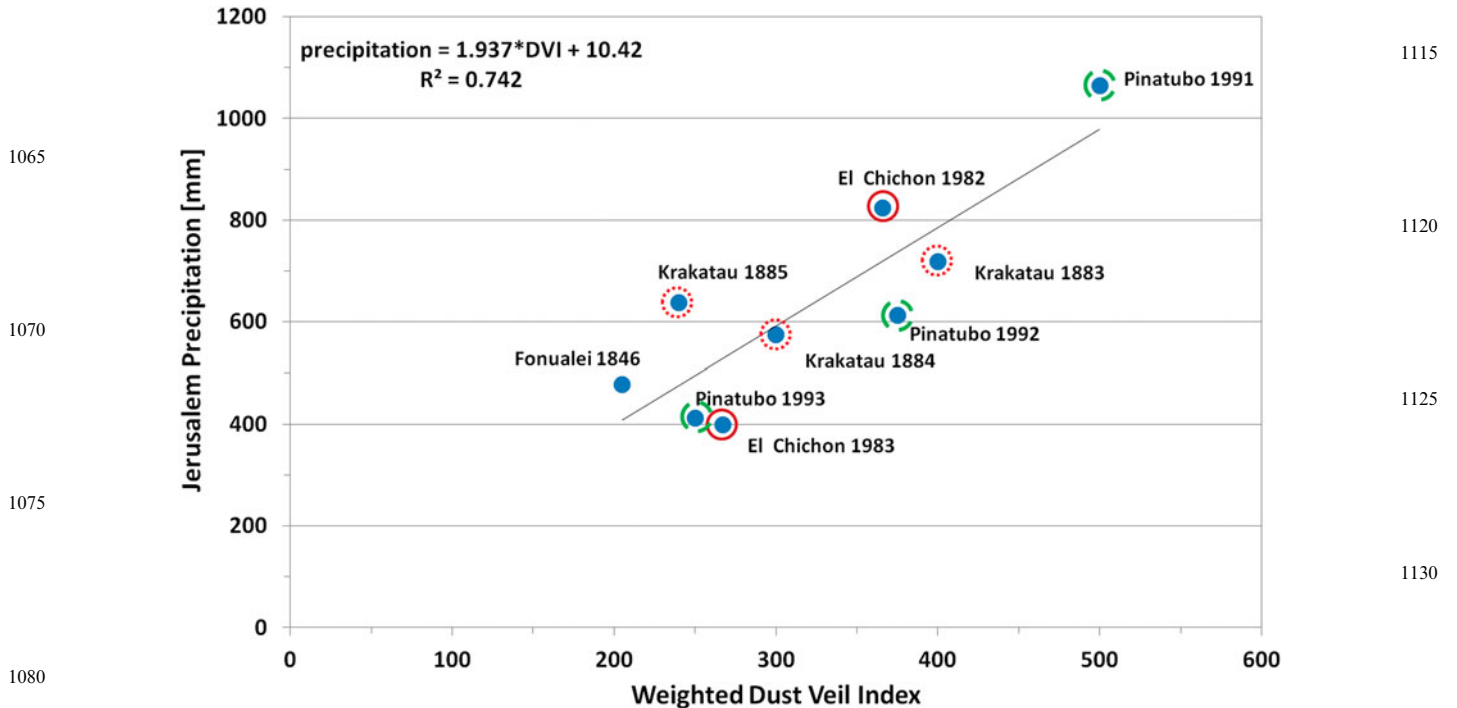


Figure 7. Rainfall in Jerusalem as a function of the northern hemisphere weighted Dust Veil Index (DVI) for years where the DVI values were above 200. Data points for consecutive years of the same volcanic eruption are encircled by the same pattern.

Out of the three wettest years, only 1991 coincided with a high weighted DVI, as indicated by the squares in Fig. 6. However, Fig. 7 shows that a strong correlation exists between rainfall and DVI in years where the weighted DVI is above 200. The average rainfall in years with weighted DVI values above 200 is 22% higher than in other years (significant with P-value = 0.034, Student's two-tailed t test). This indicates that when the concentration of dust in the stratosphere is high, there is a strong probability of a wet year, but not vice versa, as additional factors may induce wet years. Following the two largest eruptions of the past 150 years (Krakatau in 1883 and Pinatubo in 1991), the dust remained in the stratosphere for four years and coincided with relatively high rainfall in the first years after the eruption. These findings may have important implications for the influence of climate on the history of the southern Levant, particularly the 536 AD dust veil.

## Discussion

### The 5th century

In putting together the historical-archaeological and climatic data presented above, a convergence emerges between the decline in 5th century coin finds and extensive 5th century drought in the southern Levant and Roman East. Is this merely a coincidence or is

there a causal relationship? It is our contention that while not deterministically related, there is a causal connection between these climatic changes and economic/demographic responses.

Safrai (1998) originally attributed the apparent 5th century economic decline primarily to the Barbarian invasions and the deterioration of the western Roman Empire (Safrai 1998: 109–27, 130). More recently, the local palaeoclimatic evidence for extensive drought suggests an even more compelling cause (Safrai 2011–2014). However, these two explanations, one climatic and the other cultural, are not mutually exclusive. Cook (2013) has proposed that the 5th century drought evidenced by tree-rings in China may well have affected the Asian steppes, catalysing the Hunnic invasion. Meanwhile, a long 5th century drought in Asia Minor, the centre of the eastern Roman Empire, would surely have had dire economic consequences.

On the supply side, the decline in precipitation must have caused a decrease in agricultural output for both the southern Levant and Asia Minor. This multi-regional drought would have put particular strain on the Empire's buffering capacity through trade. On the demand side, decreased agricultural output combined with the Barbarian invasions could have caused population decline, which in 5th century Rome was acute (Twine 1992). This decline, combined

with the disruption of trade brought on by the Barbarian invasions (Morrisson and Sodini 2002: 172; Stathakopoulos 2007), must have harmed demand for Levantine exports, as originally suggested by Safrai (1998). Such downward shifts of supply and demand would have led directly to a drop in quantities sold and traded, and hence in the number of incidental coin finds for the period.

The 5th century has been singled out as a watershed of divergent climate patterns between central Europe and central Asia, perhaps explaining the differing fates of the eastern and western Roman Empires (McCormick *et al.* 2012). It has been proposed that these climatic patterns reflect a shift from a more positive to a more negative North Atlantic Oscillation (NAO) (Harper 2017a; see also Manning 2013: 160). Our analysis suggests that this explanation based on a wide-reaching climatic mechanism is inapplicable to the southern Levant. Black (2011) has shown that a correlation exists between NAO positive winters and the chance of very high precipitation in Israel, but not between NAO negative conditions and drought. Harper's (2017a) proposition of a more positive NAO in the early 5th century does not line up with the evidence presented here for drought. It is likely that other climatic mechanisms were more influential in the 5th century southern Levant.

#### The 6th century

The correlation between the weighted Dust Veil Index (DVI) and precipitation in Jerusalem suggests a strong likelihood that the 536 AD dust veil would have caused heightened rainfall in the southern Levant. This prediction is borne out by the Soreq speleothem palaeoclimatic reconstructions (Bar-Matthews *et al.* 2003; Orland *et al.* 2009; Figs 4, 5) as well as Dead Sea levels (Enzel *et al.* 2003; Migowski *et al.* 2006; Fig. 5). Additional evidence derives from ephemeral stream sedimentation records. In northern Jordan, Late Byzantine sediments dominated by pseudoplastic debris flows, including large boulders, attest to extreme flash flooding in Wadi Queilbeh at the site of Abila, and in nearby Beit Ras (Lucke *et al.* 2012). These were radiocarbon-dated to 521–667 AD, although insufficient bleaching of quartz grains hindered precise dating (Lucke and Schmidt 2017). It has been suggested that the onset of this sedimentation coincided with the 536 AD event (Lucke 2014; Lucke and Schmidt 2017; Lucke *et al.* 2012). In southern Jordan, in and around Petra, there is also evidence for rapid Late Byzantine sedimentation (Lucke, pers. comm.). In the Negev, Greenbaum *et al.* (2000: 961) identify the Late Byzantine–Early Islamic period

(1380–880 BP) as one marked by numerous high magnitude floods in Nahal Zin. Throughout the Mediterranean, sedimentation records portray the 6th century as a peak period of flooding (Luterbacher *et al.* 2012: 109, 111, 115–16).

The evidence from the southern Levant for heightened precipitation and extreme flash flooding complements the evidence from Europe for drought during the same period; both were the result of global cooling in the immediate aftermath of the dust veil and during the Late Antique Little Ice Age. The question is, were these rains a blessing or a curse for the southern Levant? In this sub-humid to arid region, extra rainfall is usually a boon for agriculture and may have had a positive effect on Palestine in the short term (*c.* 536–545 AD). The localized rise in rainfall could have improved local yields just when other parts of the Empire were dealing with drought and crop failure. Historical sources relate that in the aftermath of the dust veil, Italy imported food from Histria in present-day Romania (Arjava 2005); it is possible that Palestine was another such source of emergency food imports. However, this scenario depends on relatively moderate rainfall intensity. Although the sudden 6th century hike in reconstructed precipitation from Soreq cave speleothems does not yield particularly extreme levels on the millennial time scale, this data fails to reflect the intensity of rain events. The sedimentation evidence suggests extreme flash flooding which could have been devastating for agricultural yields and infrastructure (Lucke 2011: 593). However, it is not yet clear how geographically widespread these floods were within the southern Levant.

Thus, more evidence is needed to determine whether the immediate aftermath of the 536 AD dust veil was the first in a series of disasters, or a boost of vitality preceding them. Either way, it is likely that after a few years the immediate climatic effects of the dust veil would have worn off, superseded by Justinianic plague, earthquakes and Persian conquest (Harper 2017b: 254). Of course, the economic and demographic consequences of these events have also been debated (Kennedy 2007; Meier 2016; Morrisson and Sodini 2002: 193–95). Sarris (2006: 224) has suggested that in the aftermath of the plague, peasants and labourers benefited economically from the population decrease that left their services in low supply. Notwithstanding, by the 560s AD the entrenchment of aristocratic power led to the failure of Justinian's reforms, a reversal of the trend of improved living standards, heightened social tensions, and the weakening of Asia Minor in the face of military threat (Sarris



2006: 228–34). Indeed, throughout the Byzantine Empire there are signs of economic and demographic decline, manifest in construction, urban design and trade, beginning in the second half of the 6th century (Morrisson and Sodini 2002: 186, 189–91, 211–12, 219–20). However, evidence for settlement decline in the southern Levant during this period has thus far been somewhat sparse (e.g. Ariel 2002: 299–300; 2013; Briend and Humbert 1980; Hirschfeld 2007).

This raises the challenge of detecting economic changes during this period, which may be met with recourse to the archaeological sciences. The economic effects of the dust veil should be detectable in the form of precision-dated changes in archaeobotanical and archaeozoological records. For instance, trends in the relative quantities of cash crops, such as wine grapes in archaeobotanical assemblages, may be an important gauge of economic growth and decline. Evidence for this sort of fluctuation in commercial-scale viticulture will play a critical role in the debate on the source of the Byzantine Gaza wine, and its response to the Late Byzantine perturbations (Decker 2009: 138–39; Mayerson 1985; McCormick 2012: 69–70; Jon Seligman pers. comm.). Similar considerations may be applied to other types of agricultural crops, such as wheat and barley (Fuks et al. 2016). Meanwhile, the known chronological specificity of the dust veil event should facilitate isolation of the climate variable in historical-economic reconstructions of the 6th century. This requires that a high-resolution chronology be attained for the archaeological evidence.

### The 7th century?

A natural continuation of this presentation of proposed palaeoclimatic and historical consilience might be the Persian and Islamic conquests of the 7th century. This is tempting considering the apparent rainfall decline of the 7th century (Figs 4, 5b), the decline in olive pollen (Neumann et al. 2007b; 2010), and the pressure that aridification places on nomadic pastoralists mentioned above (Shmueli 1980; see also Koder 1996: 277–78; McCormick et al. 2012: 190, 197). Indeed, border disputes in ancient Greece (Howe 2008: 77–98), the Hun and Avar migrations into the western Roman Empire (McCormick et al. 2012: 203), and the later Turkish and Mongol invasions in the East (Kennedy 1986: 347; Khazanov 1994: 234–36; Xoplaki et al. 2016: 247), have all been attributed to the drought-exacerbated search for rangeland by nomadic pastoralists (see also discussion in Halsall 2007: 417–54). Much the same could be argued for the Arabian tribes united by Muhammad,

but that would be beyond the scope of the present article. Applying a simple climatic explanation to such an earth-shattering and complex historical event as the Islamic conquest would perforce be deterministic (Butzer 2012; Butzer and Endfield 2012; McAnany and Yoffee 2010). By contrast, the historical processes discussed above differ in at least two important respects.

First, the local economic/demographic effects of the 5th century numismatic decline and the 6th century dust veil can be more easily established than those of the 7th century Sasanid and Islamic conquests. In the case of the 5th century, the chronological period is limited to one century, and the numismatic and climatic data presented are relatively straightforward. The 6th century dust veil, although of global proportions, is very chronologically specific, which facilitates isolation of the climate variable in high-resolution palaeoclimatic and archaeological proxy data. This is very difficult to do for the 7th century, at which time both conquest and climate change coincided in the southern Levant.

Second, in line with the ‘intensification and abatement’ model (Avni 2014: 16, 352; Horden and Purcell 2000: 263–70; LaBianca 1990), these cases contribute to a more complex, rather than monolithic, picture of the period. The notion of extended and uniform economic expansion in the Byzantine southern Levant is no longer tenable, nor, it seems, is the paradigm of protracted decline in the post-Byzantine period (Avni 2011; 2014; Magness 2003; Walmsley 2007; Whittow 2003). That said, the 7th century conquests may have caused long-term disruptions in some regions, and the new regimes did alter state structures, military dispositions and political allegiances (e.g. Haldon 2010; Kennedy 1985). Coinage for this century in the southern Levant displays regional complexity, with monetary continuity in some sites, monetary weakening in others, and demonetization in still others (Walmsley 2010). The economic history of the 7th-century Byzantine-Islamic transition is both too complex and insufficiently researched to identify meaningful climatic consilience at present.

### Conclusion

As climate becomes an ever-larger issue in the study of the human past, the identification of converging trends in history and climate is an increasingly important task. In this article, we identified three instances of such correlations in the southern Levant, during each of the 5th, 6th and 7th centuries. For the first two cases, causal connections were argued for.

1380 Regarding the 5th century, our re-examination of  
Safrai's 'missing century' hypothesis demonstrates  
that economic decline interpretations and purely  
fiscal explanations of the numismatic trends are not  
mutually exclusive. Neither is the economic decline  
1385 approach refuted by other evidence. Rather, the  
'missing century' hypothesis is valid and has explan-  
atory value both on the centennial and multi-centennial  
scale. In light of current evidence for drought during  
the same period in the southern Levant and other  
regions, notably Anatolia, we suggest a climatic ulti-  
1390 mate cause for this proposed economic decline.  
Proximate causes may still include Barbarian inva-  
sions in the western Roman Empire, demographic  
decline and altered imperial fiscal policies.

1395 Regarding the 6th century, previous studies have  
provided evidence for cooling and drought in  
Europe following the extreme volcanic eruptions of  
the 530s/540 AD. Here we add a Levantine per-  
spective which predicts increased rainfall following  
the same volcano-induced cooling — a forecast sup-  
1400 ported by a strong correlation between the weighted  
Dust Veil Index (DVI) and annual precipitation in  
Jerusalem. This prediction is borne out by palaeocli-  
matic re-constructions from Soreq speleothems and  
Dead Sea levels, as well as evidence for extreme  
1405 flash flooding in riverbed sediments in Transjordan  
and the Negev. Drought in Europe and flooding  
in the Middle East are both expected outcomes of  
global cooling during volcanic winters, such as  
those described in historical accounts of the 530s  
1410 AD. The economic and demographic repercussions  
of the volcano-induced precipitation rise in the  
southern Levant are less clear-cut. After a few  
years, however, the combined effects of plague,  
earthquakes and war likely overshadowed the  
1415 short-term impact of the dust veil.

In the 7th century, a trend toward aridification is  
coeval with the Sasanid and Islamic conquests. The  
possibility of a causal connection cannot be ruled  
out, but neither can it be easily established at  
1420 present. This raises a final point. Identifying consili-  
ence requires good data and careful interpretation.  
Arjava (2005: 74) has noted the 'danger of hastily  
dating all suitable economic change precisely to the  
middle of the sixth century' or any 'predetermined  
1425 crisis point' in local archaeological studies.

Here, the most up-to-date and relevant data avail-  
able were employed and inferences were drawn care-  
fully. Nevertheless, it is certain that the evidence will  
be greatly enhanced in coming years. This will not  
1430 only include more and improved regional and micro-  
regional palaeoclimatic data (Burstyn *et al.* 2016;

Luterbacher *et al.* 2016), but also historical and  
archaeological inquiries spurred by the desire to test  
empirically the types of predictions and hypotheses  
1435 presented here. A good example of the latter is the  
Byzantine Bio-Archaeology Research Program of the  
Negev (BYBAN), which brings together the range of  
archaeological sciences to answer historical questions  
on sustainability, collapse and resilience (Fuks *et al.*  
2016; Tepper *et al.* 2015; 2017). By focusing on pro-  
1440 cesses that have been largely overlooked in archaeo-  
logical and historical studies of the Byzantine southern  
Levant, it is hoped that this article will encourage  
new lines of future research.

### Acknowledgements

The authors wish to thank Jay Rosenberg for drawing  
the maps; Kyle Harper for answering questions and  
1450 sharing unpublished work on economics and climate  
in the 5th and 6th centuries; Bernhard Lucke for infor-  
mation and discussion on Late Byzantine sedimen-  
tation in Jordan; Nahshon Roche for editing  
assistance; and two anonymous referees for their sug-  
1455 gestions that improved an earlier version of this manu-  
script. This research was made possible by a  
scholarship from Bar-Ilan University's Doctoral  
Fellowships of Excellence Program.

### ORCID

A. Ayalon  <http://orcid.org/0000-0002-6888-4995>

A. M. Maeir  <http://orcid.org/0000-0003-3230-292X>

### References

- 1465 Adan-Bayewitz, D. 1993. *Common Pottery in Roman Galilee*. Ramat-  
Gan: Bar-Ilan University Press.
- Ariel, D. T. 2002. The coins from the surveys and excavations of caves in  
the northern Judean Desert. *'Atiqot* 41: 281–304.
- 2013. The coins from Ashqelon, the 'Third Mile Estate'. *'Atiqot*  
74: 229–38.
- d'Arrigo, R., Frank, D., Jacoby, G. and Pederson, N. 2001. Spatial  
1470 response to major volcanic events in or about AD 536, 934 and  
1258: frost rings and other dendrochronological evidence from  
Mongolia and northern Siberia: comment on R. B. Stothers,  
'Volcanic dry fogs, climate cooling, and plague pandemics in  
Europe and the Middle East'. *Climatic Change* 49: 239–46.
- Arjava, A. 2005. The mystery cloud of 536 CE in the Mediterranean  
sources. *Dumbarton Oaks Papers* 59: 73–94.
- 1475 Avi-Yonah, M. 1958. The economics of Byzantine Palestine. *Israel*  
*Exploration Journal* 8(1): 39–51.
- Avni, G. 2011. 'From Polis to Madina' revisited: urban change in  
Byzantine and Early Islamic Palestine. *Journal of the Royal*  
*Asiatic Society* 21(3): 301–29.
- 2014. *The Byzantine-Islamic Transition in Palestine: An*  
*Archaeological Approach*. Oxford: Oxford University Press.
- 1480 Axboe, M. 1999. The Year 536 and the Scandinavian Gold Hoards.  
*Medieval Archaeology* 43: 186–188.
- Bagnall, R. S. 1992. Landholding in Late Roman Egypt: the distribution  
of wealth. *Journal of Roman Studies* 82: 128–49.
- Baillie, M. G. L. 1991. Marking in marker dates: towards an archaeology  
with historical precision. *World Archaeology* 23(2): 233–43.

- 1485 ——— 1994. Dendrochronology raises questions about the nature of the AD 536 Dust-Veil Event. *Holocene* 4(2): 212–17.
- 1999. *Exodus to Arthur: Catastrophic Encounters with Comets*. London: Batsford.
- 2007. Tree-rings indicate global environmental downturns that could have been caused by comet bebris. In, Bobrowsky, P. T. and Rickman, H. (eds), *Comet/Asteroid Impacts and Human Society: An Interdisciplinary Approach*: 105–22. [e-book] Berlin: Springer. Available through: SpringerLink <[http://link.springer.com/chapter/10.1007/978-3-540-32711-0\\_5](http://link.springer.com/chapter/10.1007/978-3-540-32711-0_5)> [Accessed 10 May 2017].
- 1490 ——— 2008. Proposed re-dating of the European ice core chronology by seven years prior to the 7th century AD. *Geophysical Research Letters* 35(15): 3–7.
- 2010. Volcanoes, ice-cores and tree-rings: one story or two?. *Antiquity* 84(323): 202–15.
- 1495 Baillie, M. G. L. and McAneney, J. 2015. Tree ring effects and ice core acidities clarify the volcanic record of the first millennium. *Climate of the Past* 11(1): 105–14.
- Banaji, J. 1992. *Rural Communities in the Late Empire AD 300–700, Monetary and Economic Aspects*. PhD, University of Oxford.
- 1999. Agrarian history and the labour organization of Byzantine large estates. In, Bowman, A. K. and Rogan, E. L. (eds), *Agriculture in Egypt from Pharaonic to Modern Times*: 193–216. Oxford: British Academy.
- 1500 ——— 2007. *Agrarian Change in Late Antiquity: Gold, Labour, and Aristocratic Dominance*. Oxford: Oxford University Press.
- Bar-Matthews, M. and Ayalon, A. 2004. Speleothems as palaeoclimate indicators, a case study from Soreq Cave located in the eastern Mediterranean region, Israel. In, Battarbee, R. W., Gasse, F. and Stickley, C. E. (eds), *Past Climate Variability through Europe and Africa*: 363–91. [e-book] Dordrecht: Springer Netherlands. Available through: Springer <<http://www.springer.com/la/book/9781402021206>> [Accessed 16 May 2017].
- 1505 ——— 2011. Mid-Holocene climate variations revealed by high-resolution speleothem records from Soreq Cave, Israel and their correlation with cultural changes. *Holocene* 21(1): 163–71.
- 1510 Bar-Matthews, M., Ayalon, A. and Kaufman, A. 1998. Middle to Late Holocene (6,500 yr. period) palaeoclimate in the eastern Mediterranean region from stable isotopic composition of speleothems from Soreq Cave, Israel. In Issar, A. S. and Brown, N. (eds), *Water, Environment and Society in Times of Climatic Change*: 203–14. [e-book] Dordrecht: Springer Netherlands. Available through: SpringerLink <<http://doi.org/10.1007/978-94-017-3659-6>> [Accessed 14 May 2017].
- 1515 Bar-Matthews, M., Ayalon, A., Gilmour, M., Bar-Matthews, M. and Hawkesworth, C. 2003. Sea-land isotopic relationships from planktonic foraminifera and speleothems in the eastern Mediterranean region and their implications for palaeorainfall during interglacial intervals. *Geochimica et Cosmochimica Acta* 67: 3181–99.
- 1520 Baruch, U. 1986. The Late Holocene vegetational history of Lake Kinneret (Sea of Galilee), Israel. *Paléorient* 12: 37–47.
- Ben David, C. 2006. *The Jewish Settlement in the Golan in the Roman and Byzantine Period*. Qasrin: Golan Studies Institute. (Hebrew with English abstract).
- Bijovsky, G. I. 2000–2002. The currency of the fifth century C.E. in Palestine: some reflections in light of the numismatic evidence. *Israel Numismatic Journal* 14: 196–210.
- 1525 ——— 2012. *Gold Coin and Small Change: Monetary Circulation in Fifth-Seventh Century Byzantine Palestine*. Trieste: Edizioni Università di Trieste and Israel Numismatic Society.
- Black, E. 2011. The influence of the North Atlantic oscillation and European circulation regimes on the daily to interannual variability of winter precipitation in Israel. *International Journal of Climatology* 32(11): 1654–64.
- 1530 Bondeson, L. and Bondesson, T. 2014. On the mystery cloud of AD 536, a crisis in dispute and epidemic ergotism: a linking hypothesis. *Danish Journal of Archaeology* 3(1): 61–67.
- Bookman, R., Enzel, Y., Agnon, A. and Stein, M. 2004. Late Holocene lake-levels of the Dead Sea. *Bulletin of the Geological Society of America* 116: 555–71.
- 1535 Bookman, R., Filin, S., Avni, Y., Rosenfeld, D. and Marco, S. 2014. Possible connection between large volcanic eruptions and level rise episodes in the Dead Sea Basin. *Quaternary Science Reviews* 89: 123–28.
- Bowman, A. and Wilson, A. 2009. Quantifying the Roman economy: integration, growth, decline? In, Bowman, A. and Wilson, A. (eds), *Quantifying the Roman Economy: Methods and Problems*: 3–84. Oxford: Oxford University Press. 1540
- Briend, J. and Humbert, J. H. 1980. *Tell Keisan: (1971–1976): Une Cite Phenicienne en Galilee*. Fribourg: Editions Universitaires.
- Brooks, N. 2013. Beyond collapse: climate change and causality during the Middle Holocene climatic transition, 6400–5000 years before present. *Geografisk Tidsskrift-Danish Journal of Geography* 112 (2): 93–104.
- Bruins, H. J. 1994. Comparative chronology of climate and human history in the southern Levant from the Late Chalcolithic to the early Arab Period. In, Bar-Yosef, O. and Kra, R. S. (eds), *Late Quaternary Chronology and Palaeoclimates of the Eastern Mediterranean*: 301–14. Tucson: Radiocarbon. 1545
- Büntgen, U., Tegel, W., Nicolussi, K., McCormick, M., Frank, D., Trouet, V., Kaplan, J. O., Herzig, F., Heussner, K. U., Wanner, H., Luterbacher, J. and Esper, J. 2011. 2500 years of European climate variability and human susceptibility. *Science* 331(6017): 578–82. 1550
- Büntgen, U., Myglan, V. S., Ljungqvist, F. C., McCormick, M., Di Cosmo, N., Sigl, M., Jungclaus, J., Wagner, S., Krusic, P. J., Esper, J., Kaplan, J. O., de Vaan, M. A. C., Luterbacher, J., Wacker, L., Tegel, W. and Kirydanov, A. V. 2016. Cooling and societal change during the Late Antique Little Ice Age from 536 to around 660 AD. *Nature Geoscience* 9: 231–36. 1555
- Burstyn, Y., Bar-Matthews, M., Ayalon, A. and Matthews, A. 2016. Rainfall control of karst solution and the inter/intra annual hydro-geochemical evolution of cave dripwater: a long-term, site-specific study, Soreq Cave, Israel. *Geophysical Research Abstracts* (EGU General Assembly) 18: 549.
- Butzer, K. W. 2012. Collapse, environment, and society. *Proceedings of the National Academy of Sciences* 109(10): 3632–39. 1560
- Butzer, K. W. and Endfield, G. H. 2012. Critical perspectives on historical collapse. *Proceedings of the National Academy of Sciences* 109 (10): 3628–31.
- Caseldine, C. J. and Turney, C. 2010. The bigger picture: towards integrating palaeoclimate and environmental data with a history of societal change. *Journal of Quaternary Science* 25: 88–93. 1565
- Clarke, J., Brooks, N., Banning, E. B., Bar-Matthews, M., Campbell, S., Clare, L., Cremaschi, M., Lernia, S., Drake, N., Gallinaro, M., Manning, S., Nicoll, K., Philip, G., Rosen, S., Schoop, U. D., Tafuri, M. A., Weninger, B. and Zerboni, A. 2016. Climatic changes and social transformations in the Near East and North Africa during the ‘Long’ 4th millennium BC: a comparative study of environmental and archaeological evidence. *Quaternary Science Reviews* 136: 96–121. 1570
- Cook, E. R. 2013. Megadroughts, ENSO, and the invasion of Late-Roman Europe by the Huns and Avars. In, Harris, W. V. (ed.), *The Ancient Mediterranean Environment between Sciences and History*: 88–102. Leiden: Brill.
- Decker, M. 2009. *Tilling the Hateful Earth: Agricultural Production and Trade in the Late Antique East*. Oxford: Oxford University Press.
- 1575 Ellenblum, R. 2012. *The Collapse of the Eastern Mediterranean: Climate Change and the Decline of the East, 950–1072*. Cambridge: Cambridge University Press.
- Enzel, Y., Bookman, R., Sharon, D., Gvirtzman, H., Dayan, U., Ziv, B. and Stein, M. 2003. Late Holocene climates of the Near-East deduced from Dead Sea-level variations and modern regional winter rainfall. *Quaternary Research* 60: 263–73.
- 1580 Evenari, M., Shanan, L. and Tadmor, N. 1982. *The Negev: The Challenge of a Desert*. Cambridge, MA: Harvard University Press.
- Faust, A. and Ashkenazy, Y. 2007. Excess in precipitation as a cause for settlement decline along the Israeli coastal plain during the third millennium BC. *Quaternary Research* 68(1): 37–44.
- Faust, A. and Safrai, Z. 2005. Salvage excavations as a source for reconstructing settlement history in ancient Israel. *Palestine Exploration Quarterly* 137: 139–58. 1585
- 2015. *The Settlement History of Ancient Israel: A Quantitative Analysis*. Ramat-Gan: Ingeborg Rennert Center for Jerusalem Studies (Hebrew).
- Ferrer-Maestro, J. J. 2014. Speculation and crisis: some examples in the eastern provinces of the later Roman Empire. In, de Francisco Heredo, A., de la Fuente, D. H. and Prieto, S. T. (eds), *New* 1590



- Perspectives on Late Antiquity in the Eastern Roman Empire*: 245–57. Newcastle upon Tyne: Cambridge Scholars Publishing.
- Findlay, R. and Lundahl, M. 2006. Demographic shocks and the factor proportions model: from the plague of Justinian to the Black Death. In, Findlay, R., Henriksson, R. G. H., Lindgren, H. and Lundahl, M. (eds), *Eli Heckscher, International Trade, and Economic History*: 157–98. Cambridge, MA: MIT Press.
- 1595 Finkelstein, I. and Langgut, D. 2014. Dry climate in the Middle Bronze I and its impact on settlement patterns in the Levant and beyond: new pollen evidence. *Journal of Near Eastern Studies* 73(2): 219–34.
- Finné, M., Holmgren, K., Sundqvist, H. S., Weiberg, E. and Lindblom, M. 2011. Climate in the eastern Mediterranean, and adjacent regions, during the past 6000 years — a review. *Journal of Archaeological Science* 38(12): 3153–73.
- 1600 Foss, C. 1975. The Persians in Asia Minor and the end of antiquity. *English Historical Review* 90: 721–47.
- 1997. Syria in transition, AD 550–750: an archaeological approach. *Dumbarton Oaks Papers* 51: 189–269.
- 2015. *Gold Coin and Small Change: Monetary Circulation in Fifth–Seventh Century Byzantine Palestine* by G. Bijovsky. Review in *Journal of Roman Archaeology* 28: 954–56.
- 1605 Frankel, R., Getzov, N., Aviam, M. and Degani, A. 2001. *Settlement Dynamics and Regional Diversity in Ancient Upper Galilee: Archaeological Survey of Upper Galilee*. Jerusalem: Israel Antiquities Authority.
- Frumkin, A. 1997. The Holocene history of Dead Sea levels. In, Niemi, T. M., Ben-Avraham, Z. and Gat, J. R. (eds), *The Dead Sea: The Lake and its Setting*: 237–48. New York and Oxford: Oxford University Press.
- 1610 ——— 2009. Stable isotopes of a subfossil tamarix tree from the Dead Sea region, Israel, and their implications for the intermediate Bronze Age environmental crisis. *Quaternary Research* 7: 319–28.
- Frumkin, A., Greenbaum, N. and Schick, A. P. 1998. Palaeohydrology of the northern Negev: comparative evaluation of two catchments. In, Issar, A. S. and Brown, N. (eds), *Water, Environment and Society in Times of Climatic Change: Contributions from an International Workshop within the Framework of International Hydrological Program (IHP) UNESCO, held at Ben-Gurion University, Sede Boker, Israel from 7–12 July 1996*. [e-book] Dordrecht: Springer Netherlands. Available through: SpringerLink <<http://doi.org/10.1007/978-94-017-3659-6>> [Accessed 14 May 2017].
- 1615 Fuks, D., Weiss, E., Tepper, Y. and Bar-Oz, G. 2016. Seeds of collapse? Reconstructing the ancient agricultural economy at Shivta in the Negev. *Antiquity* 90(353). Available through: Cambridge University Press <<http://doi.org/10.15184/aqy.2016.167>> [Accessed 14 May 2017].
- Gadot, Y. and Tepper, Y. 2012. Regavim — survey map 49. In, Sion, O., Weinblum, L., Avidov, R. and Kuris, Y. (eds), *The Archaeological Survey of Israel*. Available through: Israel Antiquities Authority: <[http://www.antiquities.org.il/survey/new/default\\_en.aspx](http://www.antiquities.org.il/survey/new/default_en.aspx)> [Accessed 14 May 2017].
- 1625 Gage K. L., Burkot, T. R., Eisen, R. J. and Hayes, E. B. 2008. Climate and vectorborne diseases. *American Journal of Preventive Medicine* 35(5): 436–50.
- Gil, M. 2006. The decline of the agrarian economy in Palestine under Roman rule. *Journal of the Economic and Social History of the Orient* 49: 285–328.
- 1630 Gitler, H. and Weisburd, D. 2005. Coin finds from villages in Palestine during the Late Roman and Byzantine Periods (A.D. 383–696/7): a quantitative examination of monetary distributions. In, Lefort, J., Morrisson, C. and Sodini, J. P. (eds), *Les Villages dans l'Empire Byzantine (IVe–XVe siècle)*: 539–52. Paris: Lethielleux.
- 1635 Göktürk, O. M. 2011. Climate in the Eastern Mediterranean Through the Holocene Inferred from Turkish Stalagmites. PhD. University of Bern. Available through: University of Bern Graduate School of Climate Sciences <<http://csold.unibe.ch/students/theses/phd/68.pdf>> [Accessed 14 May 2017].
- Göktürk, O. M., Fleitmann, D., Badertscher, S., Cheng, H., Edwards, R. L., Leuenberger, M., Fankhauser, A., Tüysüz, O. and Kramers, J. 2011. Climate on the southern Black Sea coast during the Holocene: implications from the Sofular Cave record. *Quaternary Science Reviews* 30(19): 2433–45.
- 1640 Goldreich, Y. 2003. *The Climate of Israel: Observation, Research, and Application*. New York: Kluwer Academic/Plenum Publishers.
- Gräslund, B. and Price, N. 2012. Twilight of the Gods? The ‘Dust Veil Event’ of AD 536 in critical perspective. *Antiquity* 86 (332): 428–43. 1645
- Greenbaum, N., Asher P., Schick, A. P. and Baker, V. R. 2000. The palaeoflood record of a hyperarid catchment, Nahal Zin, Negev Desert, Israel. *Earth Surface Processes and Landforms* 25(9): 951–71.
- Guest, P. 2012. The production, supply and use of Late Roman and Early Byzantine copper coinage in the eastern Empire. *The Numismatic Chronicle* 172: 105–31. 1650
- Gunn, D. (ed.) 2000. *The Years Without Summer: Tracing A.D. 536 and its Aftermath*. Oxford: Archaeopress (British Archaeological Reports International Series).
- Haiman, M. 1995a. Agriculture and nomad-state relations in the Negev Desert in the Byzantine and Early Islamic periods. *Bulletin of the American Schools of Oriental Research* 297: 29–53.
- 1995b. An early Islamic period farm at Naħal Mitnan in the Negev Highlands. *Atiqot* 26: 1–13. 1655
- 2012. Dating the agricultural terraces in the southern Levantine deserts: the spatial-contextual argument. *Journal of Arid Environments* 86: 43–49.
- Haldon, J. F. 2010. Greater Syria in the seventh century: context and background. In, Haldon, J. F. (ed.), *Money, Power and Politics in Early Islamic Syria: A Review of Current Debates*: 1–20. Farnham: Ashgate Publishing. 1660
- Haldon, J. F., Roberts, N., Izdebski, A., Fleitmann, D., McCormick, M., Cassis, M., Doonan, O., Eastwood, W., Elton, H., Ladstätter, S. and Manning, S. 2014. The climate and environment of Byzantine Anatolia: integrating science, history, and archaeology. *Journal of Interdisciplinary History* 45(2): 113–61.
- Halsall, G. 2007. *Barbarian Migrations and the Roman West, 376–568*. Cambridge: Cambridge University Press. 1665
- Hardy, E. R. 1968. *The Large Estates of Byzantine Egypt*. New York: AMS Press.
- Harper, K. 2016. People, plagues, and prices in the Roman world: the evidence from Egypt. *Journal of Economic History* 76: 803–39.
- 2017a. Framing the fifth-century climate. In, *Shifting Frontiers in Late Antiquity Twelfth Biennial Conference: ‘The Fifth Century: Age of Transformation’*. New Haven, Connecticut, 23–26 March. Available at: <<http://www.kyleharper.net/uncategorized/framing-the-fifth-century-climate/>> [Accessed 24 July 2017]. 1670
- 2017b. *The Fate of Rome: Climate, Disease, and the End of an Empire*. Princeton: Princeton University Press.
- Hickey, T. M. 2009. Aristocratic landholding and the economy of Byzantine Egypt. In, Bagnall, R. S. (ed.), *Egypt in the Byzantine World, 300–700*: 288–308. Cambridge, UK: Cambridge University Press. 1675
- Hirschfeld, Y. 2004. A climatic change in the Early Byzantine Period? Some archaeological evidence. *Palestine Exploration Quarterly* 136: 133–49.
- 2006. The crisis of the sixth century: climatic change, natural disasters and the plague. *Mediterranean Archaeology and Archaeometry* 6(1): 19–32. 1680
- 2007. *En-Gedi Excavations II, Final Report (1996–2002)*. Jerusalem: Israel Exploration Society.
- Holmgren, K., Gogou, A., Izdebski, A., Luterbacher, J., Sicre, M. A. and Xoplaki, E. 2016. Mediterranean Holocene climate, environment and human societies. *Quaternary Science Reviews* 136: 1–4.
- Horden, P. and Purcell, N. 2000. *The Corrupting Sea: A Study in Mediterranean History*. Oxford: Wiley. 1685
- Howe, T. 2008. *Pastoral Politics: Animals, Agriculture and Society in Ancient Greece*. Claremont, CA: Regina Books (Publications of the Association of Ancient Historians).
- Huntington, E. 1911. *Palestine and its Transformation*. Boston: Houghton Mifflin.
- Issar, A. S. 2003. *Climate Changes During the Holocene and their Impact on Hydrological Systems*. Cambridge: Cambridge University Press. 1690
- Issar, A. S. and Tsoar, H. 1987. Who is to blame for the desertification of the Negev, Israel? In, Solomon, S. I., Beran, M. and Hogg, W. (eds), *The Influence of Climate Change and Climatic Variability on the Hydrologic Regime and Water Resources. Proceedings of an International Symposium Held in Vancouver, Canada, 9–12 August 1987*: 577–84. Wallington: International Association of Hydrological Sciences Press. 1695



- Issar, A. S. and Zohar, M. 2004. *Climate Change: Environment and Civilization in the Middle East*. Berlin: Springer-Verlag.
- Issar, A. S., Govrin, Y., Geyh, M. A., Wakshal, E. and Wolf, M. 1991. Climate changes during the Upper Holocene in Israel. *Israel Journal of Earth Sciences* 40(1–4): 219–23.
- 1700 Izdebski, A., Holmgren, K., Weiberg, E., Stocker, S. R., Büntgen, U., Florenzano, A., Gogou, A., Leroy, S. A. G., Luterbacher, J., Martrat, B., Masi, A., Mercuri, A. M., Montagn, P., Sadori, L., Schneider, A., Sicre, M. A., Triantaphyllou, M. and Xoplaki, E. 2016. Realising consilience: how better communication between archaeologists, historians and natural scientists can transform the study of past climate change in the Mediterranean. *Quaternary Science Reviews* 136: 5–22.
- 1705 Jones, A. H. M. 1958. The Roman Colonate. *Past and Present* 13: 1–13. ——— 1964. *The Later Roman Empire*. Oxford: Basil Blackwell.
- Kausrud, K. L., Begon, M., Ben Ari, T., Viljugrein, H., Esper, J., Büntgen, U., Leirs, H., Junge, C., Yang, B., Yang, M., Xu, L. and Stenseth, N. C. 2010. Modeling the epidemiological history of plague in central Asia: palaeoclimatic forcing on a disease system over the past millennium. *BMC Biology* 8: 112.
- 1710 Kedar, Y. 1957. Water and soil from the desert: some ancient agricultural achievements in the central Negev. *Geographical Journal* 123: 179–87.
- Kennedy, H. 1985. From Polis to Madina: urban change in Late Antique and Early Islamic Syria. *Past and Present* 106: 3–27. ——— 1986. *The Prophet and the Age of the Caliphates: The Islamic Near East from the Sixth to the Eleventh Century*. London: Longman.
- 1715 ——— 2007. Justinianic Plague in Syria and the archaeological evidence. In, Little, L. (ed.), *Plague and the End of Antiquity: The Pandemic of 541–750*: 87–95. Cambridge: Cambridge University Press.
- 1720 Keys, D. 1999. *Catastrophe: An Investigation into the Origins of the Modern World*. London: Arrow Books.
- Khazanov, A. 1994. *Nomads and the Outside World*. Madison: University of Wisconsin Press.
- Kingsley, S. 2001. The economic impact of the Palestinian wine trade in Late Antiquity. In, Kingsley, S. and Decker, M. (eds), *Economy and Exchange in the East Mediterranean During Late Antiquity, Proceedings of a Conference at Somerville College, Oxford — 29<sup>th</sup> May, 1999*. Oxford: Oxbow.
- 1725 ——— 2004. *Shipwreck Archaeology of the Holy Land: Processes and Parameters*. London: Duckworth.
- Koder, J. 1996. Climatic change in the fifth and sixth centuries? In Allen, P. and Jeffreys, E. (eds), *The Sixth Century — End or Beginning?* Brisbane: Australian Association for Byzantine Studies.
- 1730 Kutiel, P., Lavee, H. and Shoshany, M. 1995. Influence of climatic transsect upon vegetation dynamics along a Mediterranean-arid transect. *Journal of Biogeography* 22: 1065–71.
- LaBianca, Ø. S. 1990. *Sedentarization and Nomadization: Food System Cycles at Hesban and Vicinity in Transjordan (Hesban, I)*. Berrian Springs: Institute of Archaeology, Andrews University.
- 1735 Lamb, H. H. 1970. Volcanic dust in the atmosphere, with a chronology and assessment of its meteorological significance. *Philosophical Transactions of the Royal Society of London, A: Mathematical, Physical and Engineering Sciences*, 266(1178): 425–533.
- Langgut, D., Finkelstein, I. and Litt, T. 2013. Climate and the Late Bronze collapse: new evidence from the southern Levant. *Tel Aviv* 40(2): 149–75.
- 1740 Langgut, D., Lev-Yadun, S. and Finkelstein, I. 2014. The Impact of olive orchard abandonment and rehabilitation on pollen signature: an experimental approach to evaluating fossil pollen data. *Ethnoarchaeology* 6(2): 121–35.
- Larsen, L. B., Vinther, B. M., Briffa, K. R., Melvin, T. M., Clausen, H. B., Jones, P. D. and Gunnarson, B. E. 2008. New ice core evidence for a volcanic cause of the AD 536 dust veil. *Geophysical Research Letters* 35(4): 1–5. Available through: Wiley Online Library <<http://onlinelibrary.wiley.com/doi/10.1029/2007GL032450/full>> [Accessed 16 May 2017].
- 1745 Lavee, H., Imeson, A. C. and Sarah, P. 1998. The impact of climate change on geomorphology and desertification along a Mediterranean-arid transect. *Land Degradation and Development* 9: 407–22.
- Leibner, U. 2004. History of Settlement in the Eastern Galilee during the Hellenistic, Roman and Byzantine Periods in the Light of an Archaeological Survey. PhD. Bar-Ilan University.
- 2009. *Settlement and History in Hellenistic, Roman, and Byzantine Galilee: An Archaeological Survey of the Eastern Galilee*. Tübingen: Mohr Siebeck.
- Liebeschuetz, W. 1992. The end of the ancient city. In, Rich, J. (ed.), *The City in Late Antiquity*: 1–49. London: Routledge.
- 1755 Ljungqvist, F. C. 2009. Temperature proxy records covering the last two millennia: a tabular and visual overview. *Geografiska Annaler* 91A: 11–29.
- Lucke, B. 2011. The demise of the decapolis: explanations of decay in the context of environmental change. *ARAM Periodical* 23: 585–99. ——— 2014. Rapid landscape change in 6th century Jordan: driven by climate or man-made? *EGU General Assembly Conference Abstracts* 16.
- 1760 Lucke, B. and Schmidt, C. 2017. Debris flows, soil creep and heavy rains in the Wadi Queilbeh, northern Jordan. *Zeitschrift für Geomorphologie, Supplementary Issues* 61(1): 159–201.
- Lucke, B., Shunnaq, M., Walker, B., Shiyab, A., al-Muheisen, Z., al-Sababha, H., Baumler, R. and Schmidt, M. 2012. Questioning Transjordan's historic desertification: a critical review of the paradigm of 'Empty Lands'. *Levant* 44(1): 101–26.
- 1765 Luterbacher, J. 2015. The year without a summer. *Nature Geoscience* 8: 246–49.
- Luterbacher, J., McCarroll, D., Fleitmann, D., Gonzalez-Rouco, F. J., Zorita, E., Salcedo, S. and Vinther, B. 2011. The first Euro-Med2k regional workshop: review of current knowledge, available data and plans for multi-proxy integration. *PAGES news* 19(2): 75–76.
- 1770 Luterbacher, J., García-Herrera, R., Akcer-On, S., Allan, R., Alvarez-Castro, M. C., Benito, G., Booth, J., Büntgen, U., Cagatay, N., Colombaroli, D., Davis, B., Esper, J., Felis, T., Fleitmann, D., Frank, D., Gallego, D., Garcia-Bustamante, E., Glaser, R., Gonzalez-Rouco, F. J., Goosse, H., Kiefer, T., Macklin, M. G., Manning, S. W., Montagna, P., Newman, L., Power, M. J., Rath, V., Ribera, P., Riemann, D., Roberts, N., Sicre, M. A., Silenzi, S., Tinner, W., Tzedakis, P. C., Valero-Garcés, B., van der Schrier, G., Vannière, B., Vogt, S., Wanner, H., Werner, J. P., Willett, G., Williams, M. H., Xoplaki, E., Zerefos, C. S., and Zorita, E. 2012. A review of 2000 years of palaeoclimatic evidence in the Mediterranean. In, P. Lionello (ed.), *The Climate of the Mediterranean Region: From the Past to the Future*: 87–185. Amsterdam and Boston: Elsevier.
- 1780 Luterbacher, J., Werner, J. P., Smerdon, J. E., Fernández-Donado, L., González-Rouco, F. J., Barriopedro, D., Ljungqvist, F. C., Büntgen, U., Zorita, E., Wagner, S., Esper, J., McCarroll, D., Toreti, A., Frank, D., Jungclaus, J. H., Barriendos, M., Bertolin, C., Bothe, O., Brázdil, R., Camuffo, D., Dobrovolný, P., Gagen, M., García-Bustamante, E., Ge, Q., Gómez-Navarro, J. J., Guiot, J., Hao, Z., Hegerl, G. C., Holmgren, K., Klimentko, V. V., Martín-Chivelet, J., Pfister, C., Roberts, N., Schindler, A., Schurer, A., Solomina, O., von Gunten, L., Wahl, E., Wanner, H., Wetter, O., Xoplaki, E., Yuan, Y., Zanchettin, D., Zhang, H. and Zerefos, C. 2016. European summer temperatures since Roman times. *Environmental Research Letters* 11(2): 1–12.
- Magness, J. 2000. The question of the synagogue: the problem of typology. In, Mimouni, S. C. (ed.), *Judaism in Late Antiquity 3. Where We Stand: Issues and Debates in Ancient Judaism*: 1–48. Leiden: Brill.
- 1790 ——— 2003. *The Archaeology of the Early Islamic Settlement in Palestine*. Winona Lake: Eisenbrauns.
- Mann, M. E., Gille, E., Overpeck, J., Gross, W., Bradley, R. S., Keimig, F. T. and Hughes, M. K. 2000. Global temperature patterns in past centuries: an interactive presentation. *Earth Interactions* 4(4): 1–29.
- 1795 Mann, M. E., Zhang, Z., Hughes, M. K., Bradley, R. S., Miller, S. K., Rutherford, S. and Ni, F. 2008. Proxy-based reconstructions of hemispheric and global surface temperature variations over the past two millennia. *Proceedings of the National Academy of Sciences* 105(36): 13252–57.
- Manning, S. W. 2013. The Roman world and climate: context, relevance of climate change, and some issues. In, Harris, W. V. (ed.), *The Ancient Mediterranean Environment between Science and History*: 103–70. Leiden: Brill.

- Mayerson, P. 1985. The wine and vineyards of Gaza in the Byzantine period. *Bulletin of the American Schools of Oriental Research* 257: 75–80.
- 1805 McAnany, P. and Yoffee, N. (eds) 2010. *Questioning Collapse: Human Resilience, Ecological Vulnerability, and the Aftermath of Empire*. Cambridge: Cambridge University Press.
- McCormick, M. 2012. Movements and markets in the first millennium: information, containers and shipwrecks. In: Morrisson, C. (ed.), *Trade and Markets in Byzantium*: 51–98. Washington, DC: Dumbarton Oaks.
- 1810 ——— 2013. What climate science, ausonius, Nile floods, rye, and thatch tell us about the environmental history of the Roman Empire. In: Harris, W. V. (ed.), *The Ancient Mediterranean Environment between Science and History*: 61–88. Leiden: Brill.
- McCormick, M., Büntgen, U., Cane, M. A., Cook, E. R., Harper, K., Huybers, P., Litt T., Manning, S. W., Mayewski, P. A., More, A. M., Nicolussi, K. and Tegel, W. 2012. Climate change during and after the Roman Empire: reconstructing the past from scientific and historical evidence. *Journal of Interdisciplinary History* 43(2): 169–220.
- 1815 McCormick, M., More, A. F., Ataoguz, J. K., Gibson, K. L., Grigoli, L., Maione-Downing, B., Reich, R., Tumator, E., Wang, J. 2013. Summary geodatabase of shipwrecks AD 1–1500, Status 2008. [spreadsheet] Cambridge, MA: DARMC Scholarly Data Series, Data Contribution Series #2013-1, DARMC, Center for Geographic Analysis, Harvard University. Available at: <<https://docs.google.com/file/d/0B4KitLDpLpYfM085TTZZUnNEdkU/edit?usp=sharing>> [Accessed 27 December 2016].
- McIntosh, R. J., Tainter, J. A. and McIntosh, S. K. (eds) 2000. *The Way the Wind Blows: Climate, History, and Human Action*. New York: Columbia University Press.
- 1825 Meier, M. 2016. The ‘Justinianic Plague’: The economic consequences of the pandemic in the eastern Roman Empire and its cultural and religious effects. *Early Medieval Europe* 24(3): 267–92.
- deMenocal, B. P. 2001. Cultural responses to climate change during the Late Holocene. *Science* 292(5517): 667–73.
- Migowski, C., Stein, M., Prasad, S., Negendank, J. F. W. and Agnon, A. 2006. Holocene climate variability and cultural evolution in the Near East from the Dead Sea sedimentary record. *Quaternary Research* 66(3): 421–31.
- 1830 Milwright, M. 2010. *An Introduction to Islamic Archaeology*. Edinburgh: Edinburgh University Press.
- Morley, W. M. 2007. The Early Roman Empire: distribution. In: Scheidel, W., Morris, I. and Saller, R. (eds), *The Cambridge Economic History of the Greco-Roman World*: 570–91. Cambridge: Cambridge University Press.
- 1835 Morrisson, C. and Sodini, J.P. 2002. The sixth-century economy. In: Laiou, A. E. (ed.), *Economic History of Byzantium, Vol. 1*: 171–220. Washington, DC: Dumbarton Oaks.
- Neumann, F. H., Schölzel, C., Litt, T., Hense, A. and Stein, M. 2007a. Holocene vegetation and climate history of the northern Golan Heights (Near East). *Vegetation History and Archaeobotany* 16: 329–46.
- 1840 Neumann, F. H., Kagan, E. J., Schwab, M. J. and Stein, M. 2007b. Palynology, sedimentology and palaeoecology of the Late Holocene Dead Sea. *Quaternary Science Reviews* 26: 1476–98.
- Neumann, F. H., Kagan, E. J., Leroy, S. A. G. and Baruch, U. 2010. Vegetation history and climate fluctuations on a transect along the Dead Sea west shore and their impact on past societies over the last 3500 years. *Journal of Arid Environments* 74(7): 756–64.
- 1845 Noeske, H. C. 2000. *Münzfunde aus Ägypten I*. Berlin: Gebr. Mann.
- Orland, I. J., Bar-Matthews, M., Kita, N. T., Ayalon, A., Matthews, A. and Valley, J. W. 2009. Climate deterioration in the eastern Mediterranean as revealed by ion microprobe analysis of a speleothem that grew from 2.2 to 0.9 ka in Soreq Cave, Israel. *Quaternary Research* 71: 27–35.
- 1850 Parker, A. J. 1992. *Ancient Shipwrecks of the Mediterranean and the Roman Provinces*. Oxford: Tempus Reparatum (British Archaeological Reports International Series).
- Perlwitz, J. and Graf, H. F. 1995. The statistical connection between tropospheric and stratospheric circulation of the Northern Hemisphere in winter. *Journal of Climate* 8(10): 2281–95.
- Peterson, A. 2005. *The Towns of Palestine under Muslim Rule*. Oxford: Archaeopress (British Archaeological Reports International Series).
- 1855 Pla, S. and Catalan, J. 2005. Chrysophyte cysts from lake sediments reveal the submillennial winter/spring climate variability in the northwestern Mediterranean region throughout the Holocene. *Climate Dynamics* 24: 263–78.
- Rambeau, C. 2010. Palaeoenvironmental reconstruction in the southern Levant: synthesis, challenges, recent developments and perspectives. *Philosophical Transactions of the Royal Society of London A: Mathematical, Physical and Engineering Sciences* 368(1931): 5225–48.
- 1860 Reifenberg, A. 1955. *The Struggle Between the Desert and the Sown: Rise and Fall of Agriculture in the Levant*. Jerusalem: Publishing Department of the Jewish Agency.
- Riehl, S. 2008. Climate and agriculture in the ancient Near East: a synthesis of the archaeobotanical and stable carbon isotope evidence. *Vegetation History and Archaeobotany* 17(S1): 43–51.
- 1865 ——— 2009. Archaeobotanical evidence for the interrelationship of agricultural decision-making and climate change in the ancient Near East. *Quaternary International* 197: 93–114.
- Riehl, S., Pustovoytov, K. E., Weippert, H., Klett, S. and Hole, F. 2014. Drought stress variability in ancient Near Eastern agricultural systems evidenced by  $\delta^{13}\text{C}$  in Barley Grain. *Proceedings of the National Academy of Sciences* 111(34): 12348–53.
- 1870 Rigby, E., Symonds, M. and Ward-Thompson, D. 2004. A comet impact in AD 536?. *Astronomy and Geophysics* 45: 1.23–1.26.
- Robock, A. and Mao, J. 1992. Winter warming from large volcanic eruptions. *Geophysical Research Letters* 19(24): 2405–08.
- Rosen, A. M. 1995. The social response to environmental change in Early Bronze Age Canaan. *Journal of Anthropological Archaeology* 14: 26–44.
- 1875 ——— 1997. Environmental change and human adaptation failure at the end of the Early Bronze Age in the southern Levant. In: Dalfes, N. H., Kula, G. and Weiss, H. (eds), *Third Millennium BC Climate Change and Old World Collapse*: 25–38. Berlin: Springer.
- 2007. *Civilizing Climate: Social Responses to Climate Change in the Ancient Near East*. Plymouth, UK: Altamira Press.
- 1880 Rosen, S. 2009. History does not repeat itself: cyclicity and particularism in Nomad-sedentary relations in the Negev in the long term. In: Szuchman, J. (ed.), *Nomads, Tribes, and the State in the Ancient Near East*: 57–86. Chicago: Oriental Institute of the University of Chicago.
- 2016. Basic instabilities? Climate and culture in the Negev over the long term. *Geoarchaeology* [e-journal], 32(1): 6–22. Available through: Wiley Online Library <<http://doi.org/10.1002/gea.21572>> [Accessed 24 May 2017].
- 1885 Rubin, R. 1989. The debate over climate changes in the Negev, 4th–7th centuries C.E. *Palestine Exploration Quarterly* 121: 71–78.
- Safrai, Z. 1986. The influence of demographic stratification on the agricultural and economic structure during the Mishnaic and Talmudic periods. In: Kasher, A., Oppenheimer, A. and Rappaport, U. (eds), *Man and Land in Eretz-Israel in Antiquity*: 20–48. Jerusalem: Ben-Zvi Institute (Hebrew with English abstract).
- 1890 ——— 1998. *The Missing Century*. Leuven: Peeters.
- 2011–2014. Where are the fifth-century coins? *Israel Numismatic Journal* 18: 198–208.
- Salzer, M. W. and Hughes, M. K. 2007. Bristlecone pine tree rings and volcanic eruptions over the last 5000 yr. *Quaternary Research* 67 (1): 57–68.
- 1895 Sarris, P. 2006. *Economy and Society in the Age of Justinian*. Cambridge: Cambridge University Press.
- Scheidel, W. 2008. In search of Roman economic growth. *Princeton/Stanford Working Papers in Classics*. Available through: Princeton University <<https://www.princeton.edu/~pswpc/pdfs/scheidel/060808.pdf>> [Accessed 27 December 2016].
- 1900 ——— 2010. Approaching the Roman Economy. *Princeton/Stanford Working Papers in Classics*. Available through: Princeton University <<https://www.princeton.edu/~pswpc/pdfs/scheidel/091007.pdf>> [Accessed 27 December 2016].
- Schick, R. 1995. *The Christian Communities of Palestine from Byzantine to Islamic Rule*. A Historical and Archaeological Study. Princeton: Darwin Press.
- 1905 ——— 1998. Palestine in the Early Islamic Period: luxuriant legacy. *Near Eastern Archaeology* 61: 74–10.
- Schilman, B., Ayalon, A., Bar-Matthews, M., Kagan, E. J. and Almogil-Labin, A. 2002. Sea-land palaeoclimate correlation in the Eastern

- Mediterranean region during the Late Holocene. *Israel Journal of Earth Sciences* 51: 181–90.
- 1910 Shao, X., Xu, Y., Yin, Z. Y., Liang, E., Zhu, H. and Wang, S. 2010. Climatic implications of a 3585-year tree-ring width chronology from the northeastern Qinghai-Tibetan plateau. *Quaternary Science Reviews* 29(17): 2111–22.
- Sheppard, P., Tarasov, P., Graumlich, L., Heussner, K., Wagner, M., Osterle, H. and Thompson, L. 2004. Annual precipitation Since 515 BC reconstructed from living and fossil juniper growth of northeast Qinghai province, China. *Climate Dynamics* 23: 869–81.
- 1915 Shmueli, A. 1980. *Nomadism About to Cease*. Tel Aviv: Reshafim (Hebrew).
- Sigl, M., Winstrup, M., McConnell, J. R., Welten, K. C., Plunkett, G., Ludlow, F., Büntgen, U., Caffee, M., Chellman, N., Dahl-Jensen, D., Fischer, H., Kipfstuhl, S., Kostick, C., Maselli, O. J., Mekhaldi, F., Mulvaney, R., Muscheler, R., Pasteris, D. R., Pilcher, J. R., Salzer, M., Schüpbach, S., Steffensen, J. P., Vinther, B. M. and Woodruff, T. E. 2015. Timing and climate forcing of volcanic eruptions for the past 2,500 years. *Nature* 523: 543–49.
- Stathakopoulos, D. C. 2007. To have and to have not: supply and shortage in the centres of the late antique world. In: Grünbart, M., Kislinger, E., Muthesius, A., Stathakopoulos, D. C. (eds), *Material Culture and Well-Being in Byzantium (400–1453)*: Proceedings of the International Conference (Cambridge, 8–10 September 2001): 211–17. Vienna: Austrian Academy of Sciences Press.
- 1925 Steinhilber, F., Beer, J. and Fröhlich, C. 2009. Total solar irradiance during the Holocene. *Geophysical Research Letters* 36: L19704.
- Stenseth N. C., Samia N. I., Viljugrein H., Kausrud, K. L., Begon, M., Davis, S., Leirs, H., Dubyanskiy, V. M., Esper, J., Ageyev, V. S. and Klassovskiy, N. L. 2006. Plague dynamics are driven by climate variation. *Proceedings of the National Academy of Sciences* 103 (35): 13110–15.
- 1930 Stepansky, Y. 2012. Rosh Pina — Survey Map 18. In: Sion, O., Weinblum, L., Avidov, R. and Kuris, Y. (eds), *The Archaeological Survey of Israel*. Available through: Israel Antiquities Authority Survey <[http://www.antiquities.org.il/survey/new/default\\_en.aspx](http://www.antiquities.org.il/survey/new/default_en.aspx)> [Accessed 16 May 2017].
- 1935 Stothers, R. B. 1984. Mystery cloud of AD 536. *Nature* 307: 344–45.
- 1999. Volcanic dry fogs, climate cooling, and plague pandemics in Europe and the Middle East. *Climatic Change* 42 (4): 713–23.
- 1940 Stothers, R. B. and Rampino, M. R. 1983. Volcanic eruptions in the Mediterranean before AD 630 from written and archaeological sources. *Journal of Geophysical Research* 88(B8): 6357–71.
- Strauss, J. 2013. Shipwrecks database. Version 1.0. available through: the Oxford Roman economy project <[oxrep.classics.ox.ac.uk/databases/shipwrecks\\_database/](http://oxrep.classics.ox.ac.uk/databases/shipwrecks_database/)> [Accessed 18 December 2016].
- 1945 Tepper, Y., Weissbrod, L. and Bar-Oz, G. 2015. Behind sealed doors: unravelling abandonment dynamics at the Byzantine site of Shivta in the Negev Desert. *Antiquity* 89 (348). Available through: Antiquity Project Gallery <<http://antiquity.ac.uk/projgall/bar-oz348>> [Accessed 15 May 2017].
- Tepper, Y., Rosen, B., Haber, A. and Bar-Oz, G. 2017. Signs of soil fertigation in the desert: a pigeon tower structure near Byzantine Shivta, Israel. *Journal of Arid Environments* 145: 81–89.
- 1965 Toohey, M., Krüger, K., Sigl, M., Stordal, F. and Svensen, H. 2016. Climatic and societal impacts of a volcanic double event at the dawn of the Middle Ages. *Climatic Change* 136: 401–12.
- Tsafrir, Y. 1996. Some notes on the settlement and demography of Palestine in the Byzantine period: the archaeological evidence. In: Seger, J. D. (ed.), *Retrieving the Past, Essays on the Archaeological Research and Methodology in Honor of G. W. Van BEEK*: 269–83. Winona Lake: Eisenbrauns.
- 1970 Twine, K. 1992. The city in decline: Rome in Late Antiquity. *Middle States Geographer* 25: 134–38.
- Vieira, L. E. A., Solanki, S. K., Krivova, N. A., and Usoskin, I. 2011. Evolution of the solar irradiance during the Holocene. *Astronomy and Astrophysics* 531 (A6).
- 1975 Walmsley, A. 2007. Economic developments and the nature of settlement in the towns and countryside of Syria-Palestine, ca. 565–800. *Dumbarton Oaks Papers* 61: 319–352.
- 2010. Coinage and the economy of Syria-Palestine in the seventh and eighth centuries CE. In: Haldon, J. F. (ed.), *Money, Power and Politics in Early Islamic Syria: A Review of Current Debates*: 1–20. Farnham: Ashgate Publishing.
- Waner, M. and Safrai, Z. 2001. A catalogue of coin hoards and the shelf life of coins in Palestine hoards during the Roman-Byzantine period. *Liber Annuus* 51: 305–36.
- 1980 Weiss, H., Courty, M. A., Wetterstrom, W., Guichard, F., Senior, L., Meadow, R. and Curnow, A. 1993. The genesis and collapse of third millennium north Mesopotamian civilization. *Science* 261 (5124): 995–1004.
- Whitcomb, D. 1988. Khirbet al-Mafjar reconsidered: the ceramic evidence. *Bulletin of the American Schools of Oriental Research* 271: 51–67.
- 1985 ——— 1994. Amsar in Syria? Syrian cities after the conquest. *ARAM Periodical* 6: 13–33.
- 1995. Islam and the socio-cultural transition of Palestine: the early Islamic period (638–1099 CE). In: Levy, T. E. (ed.), *The Archaeology of Society in the Holy Land*: 488–501. London: Bloomsbury Academic.
- 1990 Whittow, M. 2003. Decline and fall? studying long-term change in the east. *Late Antique Archaeology* 1(1): 404–23.
- Wilson, E. O. 1999. *Consilience: The Unity of Knowledge*. New York: Vintage.
- 1995 Woodbridge, J. and Roberts, N. 2011. Late Holocene climate of the eastern Mediterranean inferred from diatom analysis of annually-laminated lake sediments. *Quaternary Science Reviews* 30: 3381–92.
- Xoplaki, E., Fleitmann, D., Luterbacher, J., Wagner, S., Haldon, J. F., Zorita, E., Telelis, I., Toreti, A. and Izdebski, A. 2016. The Medieval climate anomaly and Byzantium: a review of the evidence on climatic fluctuations, economic performance and societal change. *Quaternary Science Reviews* 136: 229–52.
- 2000 Xoplaki, E., González-Rouco, F., Luterbacher, J. and Wanner, H. 2003. Wet season Mediterranean precipitation variability: influence of large-scale dynamics and trends. *Climate Dynamics* 23: 63–78.